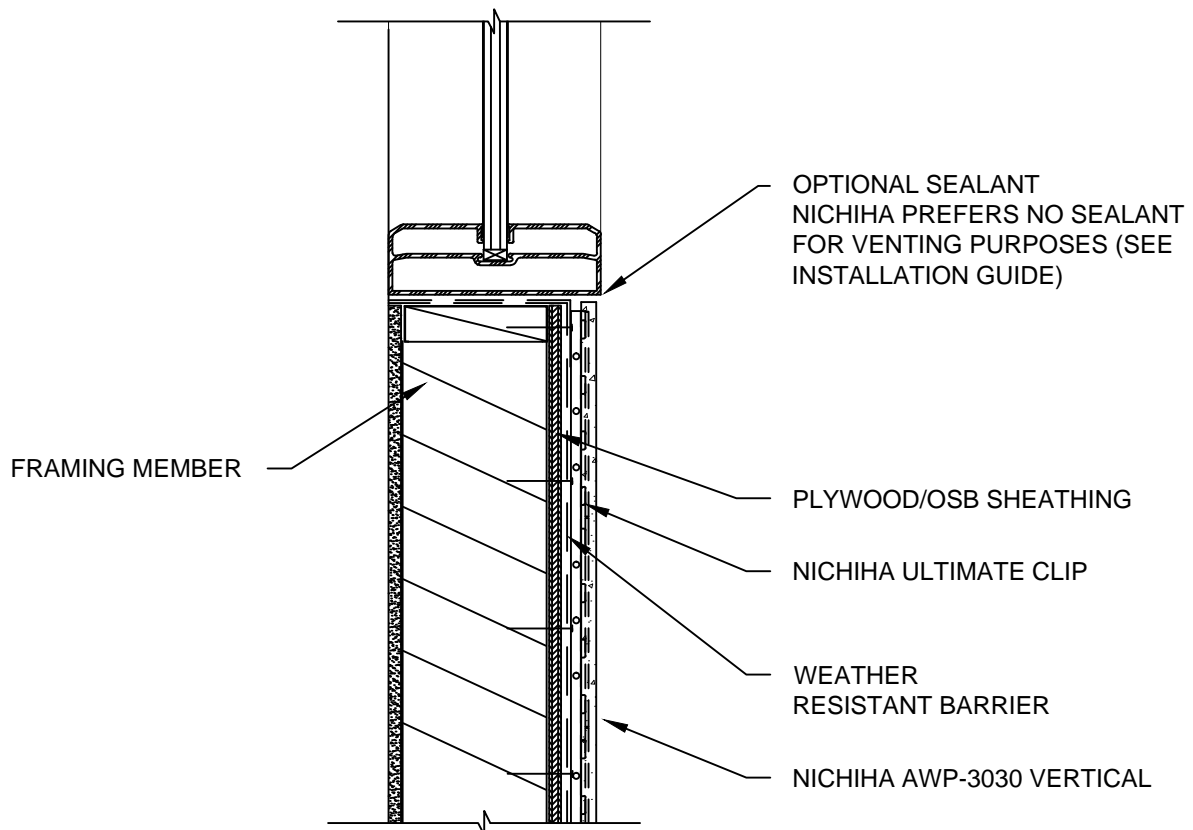


NOTES:

1. THIS CONCEPTUAL DETAIL IS A GUIDE FOR INSTALLATION OF NICHHA PRODUCTS. ARCHITECTS/ENGINEERS/CONTRACTORS ARE RESPONSIBLE FOR SUCCESSFUL APPLICATION WHICH DEPENDS UPON SUBSTRATE DESIGN AND CONSTRUCTION BUILT IN ACCORDANCE WITH BEST PRACTICES AND LOCAL BUILDING CODES.
2. FOR VERTICAL APPLICATIONS, ONLY USE NICHHA AWP-3030.
3. SHEATHING: 7/16" OR THICKER APA RATED OSB OR PLYWOOD REQUIRED WITH STUD SPACING OTHER THAN 45.5 CM (17-7/8") O.C.
4. METAL FRAMING MEMBERS MUST BE A MINIMUM OF 18 GA.
5. POSITION ULTIMATE CLIP 1" MAX FROM PANEL EDGE. ADD FOUR FASTENERS PER WHOLE CLIP.



NICHHA VERTICAL AWP-3030 - WINDOW SILL - FLUSH

SCALE: 1 1/2" = 1'-0"