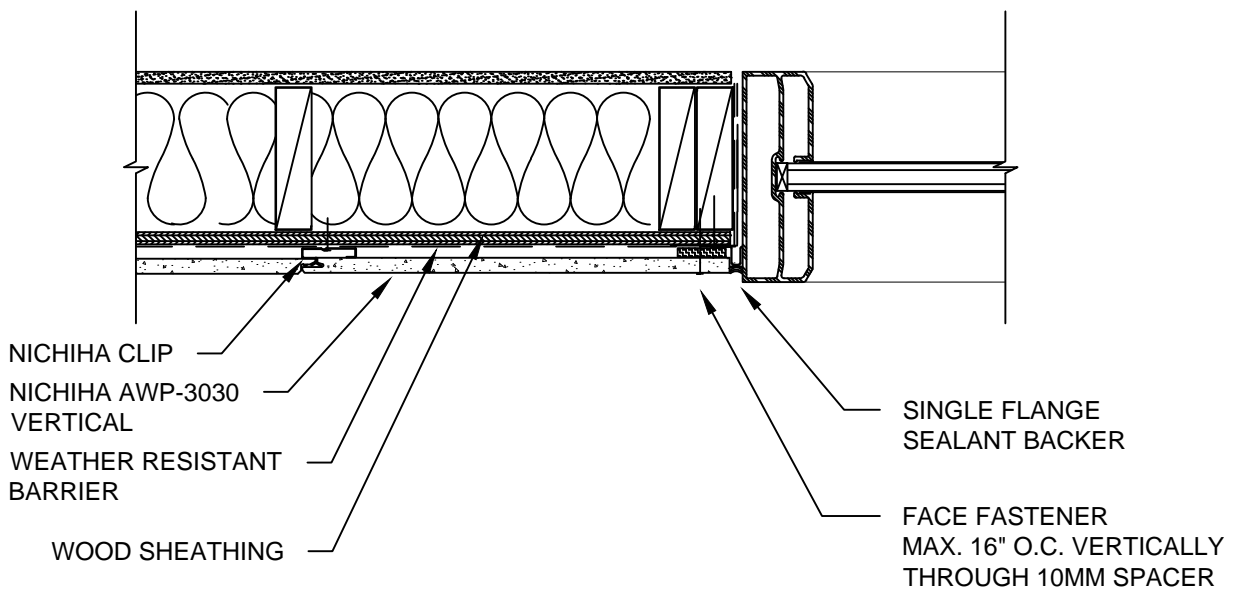


NOTES:

1. THIS CONCEPTUAL DETAIL IS A GUIDE FOR INSTALLATION OF NICHIIHA PRODUCTS. ARCHITECTS/ENGINEERS/CONTRACTORS ARE RESPONSIBLE FOR SUCCESSFUL APPLICATION WHICH DEPENDS UPON SUBSTRATE DESIGN AND CONSTRUCTION BUILT IN ACCORDANCE WITH BEST PRACTICES AND LOCAL BUILDING CODES.
2. ONLY USE AWP-3030 FOR VERTICAL INSTALLATIONS.
3. SHEATHING: 7/16" OR THICKER APA RATED OSB OR PLYWOOD REQUIRED WITH STUD SPACING OTHER THAN 45.5 CM (17-7/8") O.C.
4. METAL FRAMING MEMBERS MUST BE A MINIMUM OF 18 GA.



NICHIIHA VERTICAL AWP-3030 - WINDOW JAMB - FLUSH

SCALE: 1 1/2" = 1'-0"