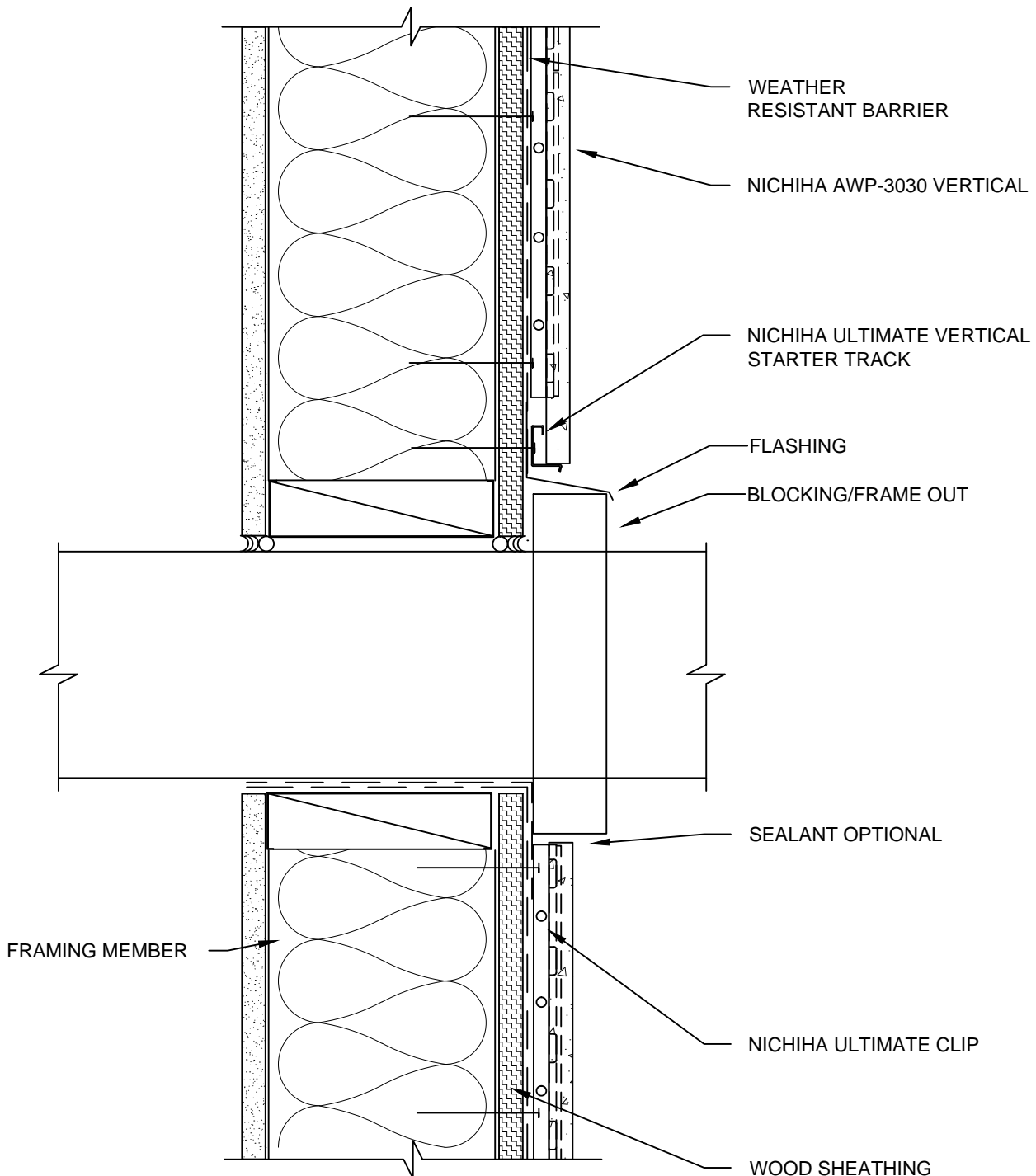


NOTES:

1. THIS CONCEPTUAL DETAIL IS A GUIDE FOR INSTALLATION OF NICHIIHA PRODUCTS. ARCHITECTS/ENGINEERS/CONTRACTORS ARE RESPONSIBLE FOR SUCCESSFUL APPLICATION WHICH DEPENDS UPON SUBSTRATE DESIGN AND CONSTRUCTION BUILT IN ACCORDANCE WITH BEST PRACTICES AND LOCAL BUILDING CODES.
2. METAL FRAMING MEMBERS MUST BE A MINIMUM OF 18 GA.
2. FOR VERTICAL APPLICATIONS, ONLY USE NICHIIHA AWP-3030.
3. SHEATHING: 7/16" OR THICKER APA RATED OSB OR PLYWOOD REQUIRED WITH STUD SPACING OTHER THAN 45.5 CM (17-7/8") O.C.
4. FOR PENETRATIONS GREATER THAN 1.5", BLOCK/FRAME OUT THE OPENING. SMALLER PENETRATIONS MAY BE CUT THROUGH PANEL AND SEALED WITH SEALANT.



NICHIIHA AWP-3030 VERTICAL - BLOCKED PENETRATION SECTION

SCALE: 3" = 1'-0"