

**NOTES:**

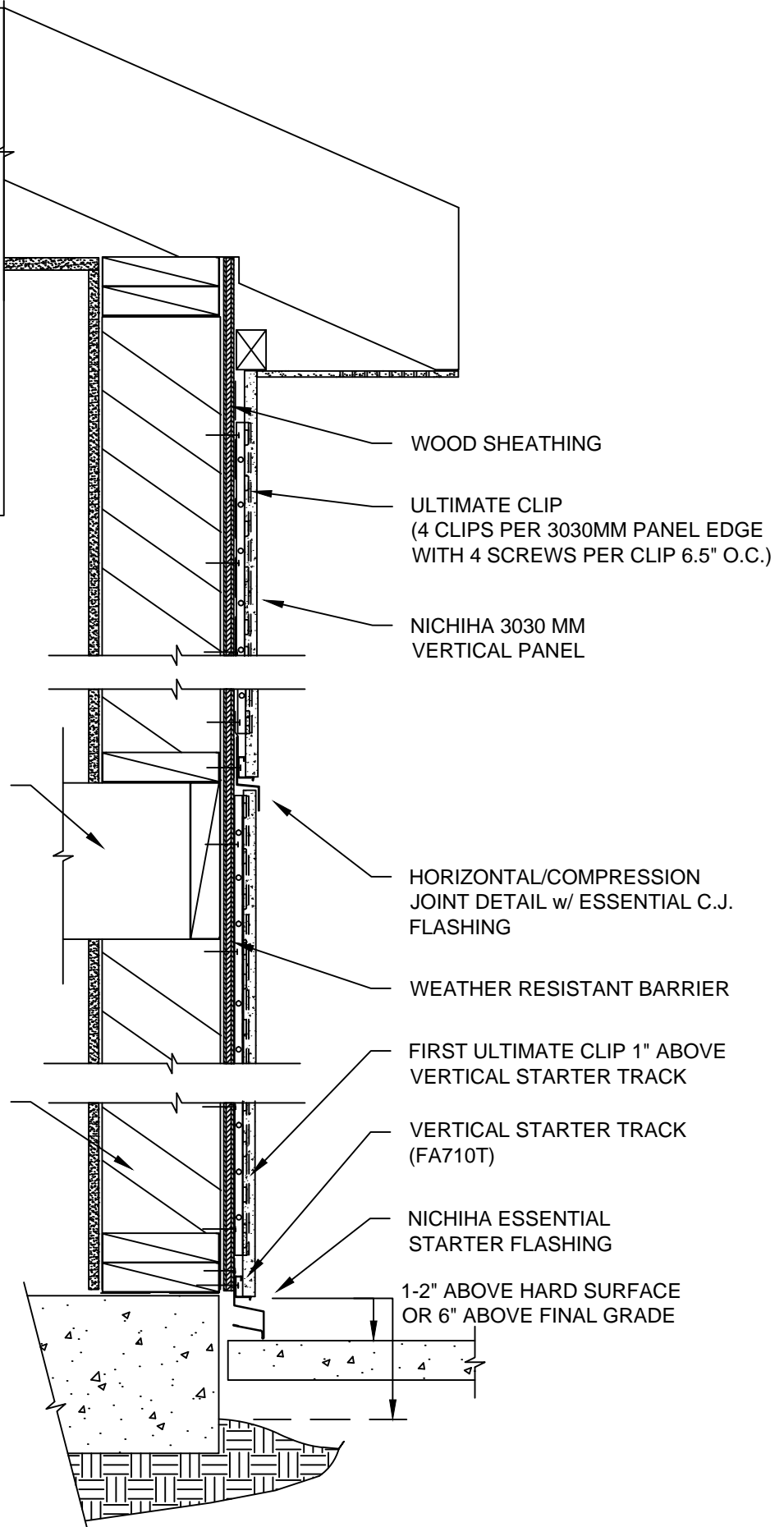
1. THIS CONCEPTUAL DETAIL IS A GUIDE FOR INSTALLATION OF NICHIIHA PRODUCTS. ARCHITECTS/ENGINEERS/CONTRACTORS ARE RESPONSIBLE FOR SUCCESSFUL APPLICATION WHICH DEPENDS UPON SUBSTRATE DESIGN AND CONSTRUCTION BUILT IN ACCORDANCE WITH BEST PRACTICES AND LOCAL BUILDING CODES.
2. USE ONLY AWP-3030 FOR VERTICAL PANEL INSTALLATIONS.
3. SHEATHING: 7/16" OR THICKER APA RATED OSB OR PLYWOOD REQUIRED WITH STUD SPACING OTHER THAN 45.5 CM (17-7/8") O.C.
4. METAL FRAMING MEMBERS MUST BE A MINIMUM OF 18 GA.

**TOP OF PANEL  
DETAIL**

FLOOR FRAMING

FRAMING MEMBER

**STARTER TRACK  
DETAIL**



WOOD SHEATHING

ULTIMATE CLIP  
(4 CLIPS PER 3030MM PANEL EDGE  
WITH 4 SCREWS PER CLIP 6.5" O.C.)

NICHIIHA 3030 MM  
VERTICAL PANEL

HORIZONTAL/COMPRESSION  
JOINT DETAIL w/ ESSENTIAL C.J.  
FLASHING

WEATHER RESISTANT BARRIER

FIRST ULTIMATE CLIP 1" ABOVE  
VERTICAL STARTER TRACK

VERTICAL STARTER TRACK  
(FA710T)

NICHIIHA ESSENTIAL  
STARTER FLASHING

1-2" ABOVE HARD SURFACE  
OR 6" ABOVE FINAL GRADE

**NICHIIHA VERTICAL AWP 3030 - TYPICAL WALL SECTION - SOFFIT**