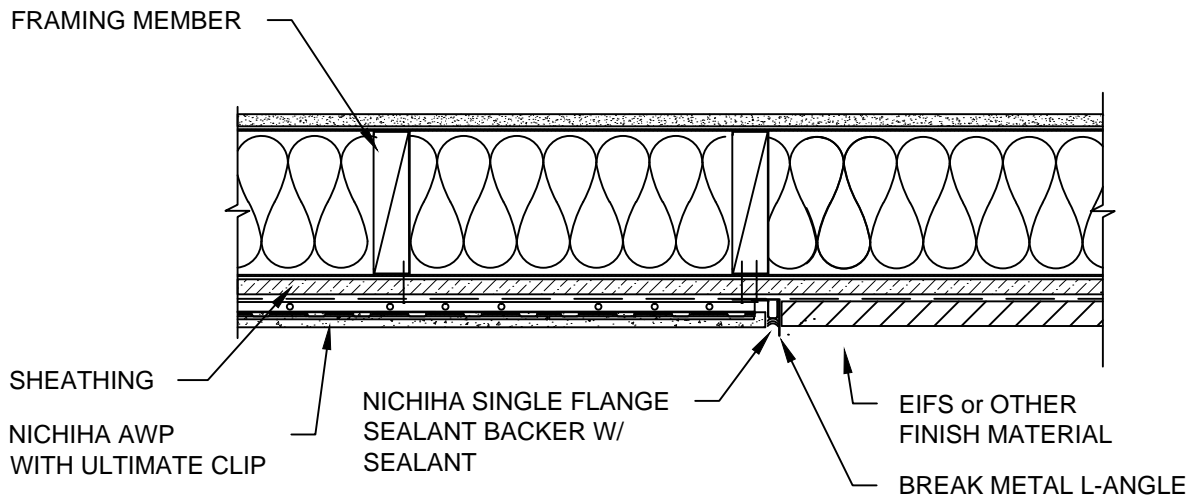


NOTES:

1. THIS CONCEPTUAL DETAIL IS A GUIDE FOR INSTALLATION OF NICHIIHA PRODUCTS. ARCHITECTS/ENGINEERS/CONTRACTORS ARE RESPONSIBLE FOR SUCCESSFUL APPLICATION WHICH DEPENDS UPON SUBSTRATE DESIGN AND CONSTRUCTION BUILT IN ACCORDANCE WITH BEST PRACTICES AND LOCAL BUILDING CODES.
2. NICHIIHA AWP REPRESENTED HERE IS 5/8" PRODUCT, ADJUST ACCORDINGLY FOR OTHER NICHIIHA PRODUCT THICKNESSES.
3. SHEATHING REPRESENTED HERE IS 5/8" GYP. IF USING OTHER THICKNESSES ADJUST ACCORDINGLY.
4. A CODE APPROVED WRB IS REQUIRED.
5. COAT ANY CUT EDGES OF AWP WITH KILZ PREMIUM/MAX OR COLOR-MATCHED 100% ACRYLIC LATEX EXTERIOR PAINT.
6. ADJUST FASTENER LENGTH TO COMPENSATE FOR UP TO 1" OF FOAM PLASTIC CONTINUOUS INSULATION.

WHEN USING OSB/PLYWOOD, NICHIIHA SINGLE FLANGE SEALANT BACKER MAY BE FASTENED TO SHEATHING



NICHIIHA HORIZONTAL AWP - VERTICAL TRANSITION JOINT

SCALE: 1 1/2" = 1'-0"