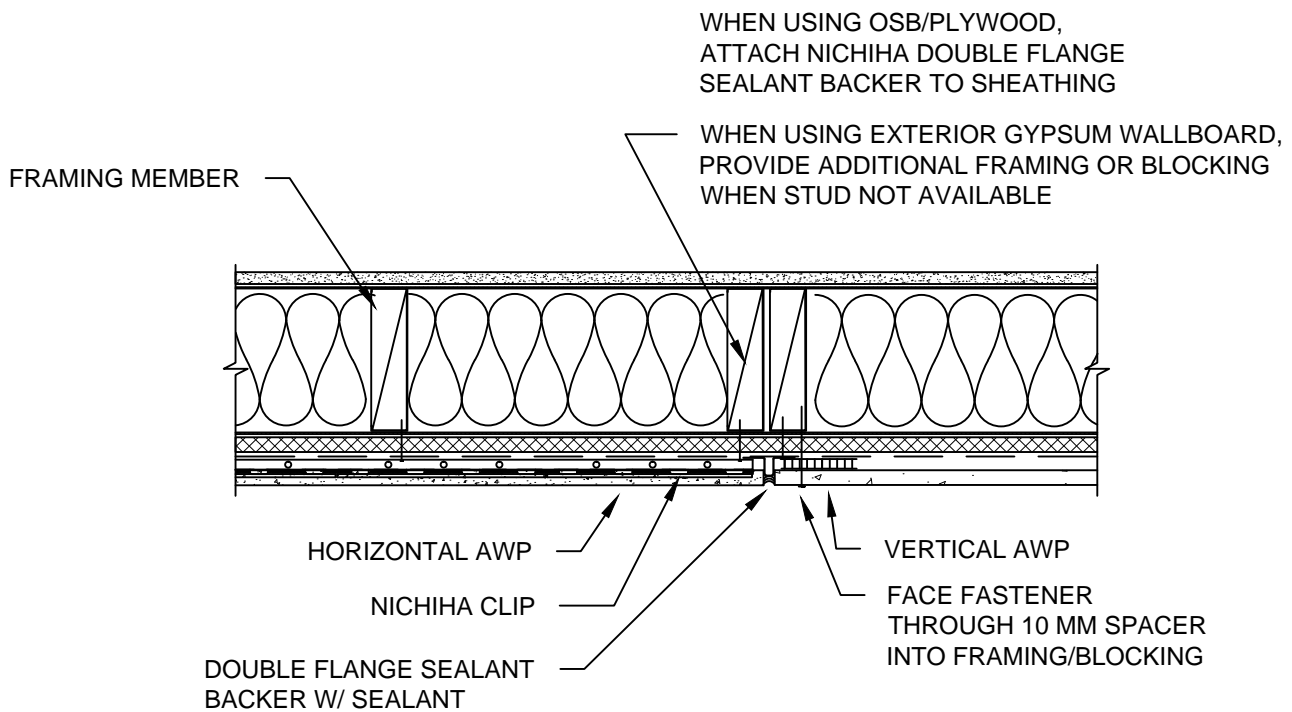


NOTES:

1. THIS CONCEPTUAL DETAIL IS A GUIDE FOR INSTALLATION OF NICHIIHA PRODUCTS. ARCHITECTS/ENGINEERS/CONTRACTORS ARE RESPONSIBLE FOR SUCCESSFUL APPLICATION WHICH DEPENDS UPON SUBSTRATE DESIGN AND CONSTRUCTION BUILT IN ACCORDANCE WITH BEST PRACTICES AND LOCAL BUILDING CODES.
2. NICHIIHA PANEL REPRESENTED HERE IS 5/8" NICHIIHA PRODUCT, ADJUST ACCORDINGLY FOR OTHER NICHIIHA PRODUCT THICKNESSES.
3. SHEATHING REPRESENTED HERE IS 5/8" OSB OR PLYWOOD. ADJUST ACCORDINGLY.
4. FACE FASTENERS MUST PENETRATE FRAMING BY INSTALL GUIDE MINIMUMS.
5. NICHIIHA REQUIRES USE OF CODE APPROVED WEATHER RESISTANT BARRIERS.
6. VERTICAL PANELS (AWP-3030 ONLY) MUST BE SUPPORTED BY VERTICAL STARTER TRACK (NOT DEPICTED).



NICHIIHA HORIZONTAL TO VERTICAL AWP TRANSITION - VERTICAL JOINT

SCALE: 1 1/2" = 1'-0"