

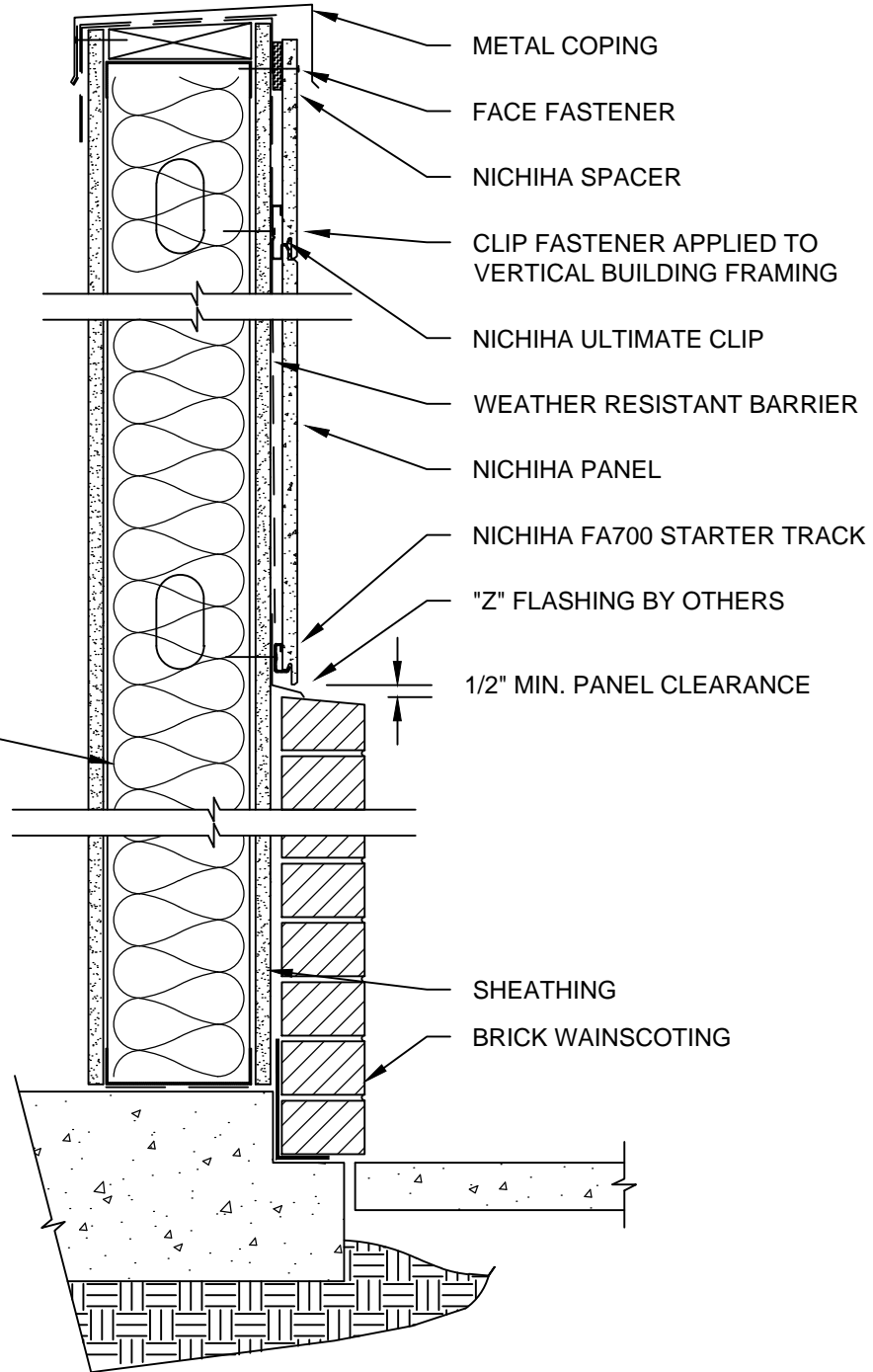
NOTES:

1. THIS CONCEPTUAL DETAIL IS A GUIDE FOR INSTALLATION OF NICHIIHA PRODUCTS. ARCHITECTS/ENGINEERS/CONTRACTORS ARE RESPONSIBLE FOR SUCCESSFUL APPLICATION WHICH DEPENDS UPON SUBSTRATE DESIGN AND CONSTRUCTION BUILT IN ACCORDANCE WITH BEST PRACTICES AND LOCAL BUILDING CODES.
2. NICHIIHA 16MM (5/8") PANEL REPRESENTED HERE. ADJUST ACCORDINGLY FOR OTHER THICKNESSES.
3. SHEATHING SHOWN IS 5/8" GYPSUM. MAKE ADJUSTMENTS FOR 7/16" OR THICKER APA RATED OSB OR PLYWOOD.
4. METAL FRAMING MEMBERS MUST BE A MINIMUM OF 18 GA.
5. ADJUST FASTENER LENGTH TO COMPENSATE FOR UP TO 1" OF FOAM PLASTIC CONTINUOUS INSULATION.

TOP OF PANEL
DETAIL

STARTER
TRACK DETAIL

METAL FRAMING
MEMBER



NICHIIHA HORIZONTAL AWP - HORIZONTAL MATERIAL TRANSITION

SCALE: 1 1/2" = 1'-0"