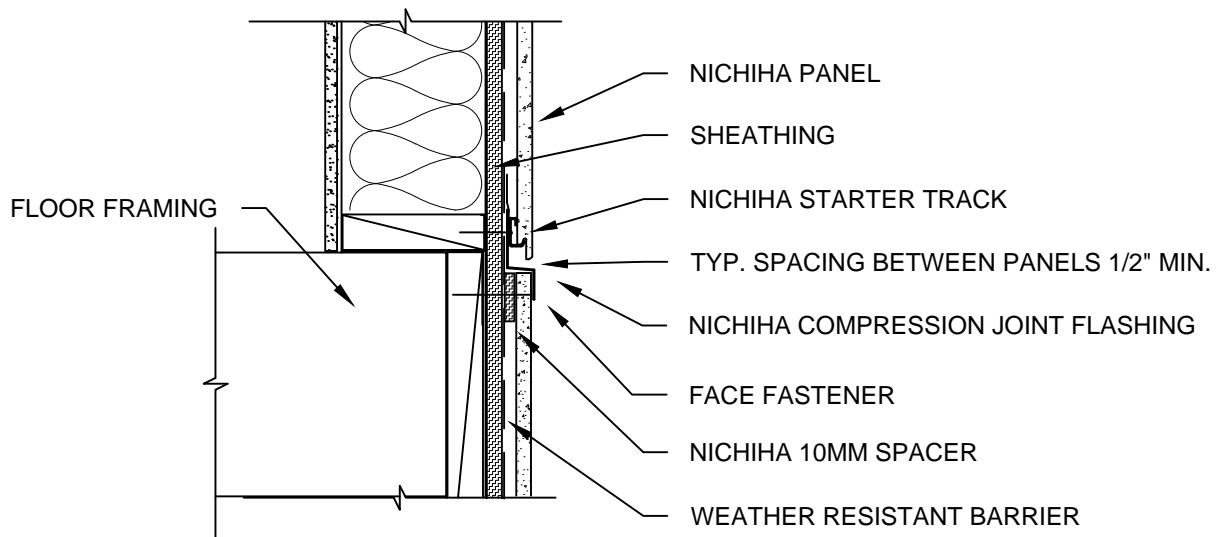


NOTES:

1. THIS CONCEPTUAL DETAIL IS A GUIDE FOR INSTALLATION OF NICHIIHA PRODUCTS. ARCHITECTS/ENGINEERS/CONTRACTORS ARE RESPONSIBLE FOR SUCCESSFUL APPLICATION WHICH DEPENDS UPON SUBSTRATE DESIGN AND CONSTRUCTION BUILT IN ACCORDANCE WITH BEST PRACTICES AND LOCAL BUILDING CODES.
2. NICHIIHA PANEL REPRESENTED HERE IS 5/8" NICHIIHA PRODUCT, ADJUST ACCORDINGLY FOR OTHER NICHIIHA PRODUCT THICKNESSES.
3. SHEATHING REPRESENTED HERE IS 5/8" EXTERIOR PLYWOOD, IF USING OSB OR GYPSUM ADJUST ACCORDINGLY.
4. DISTANCE BETWEEN EDGES OF PANELS SHOWN MUST BE A MINIMUM OF 1/2" CLEARANCE.
5. ADJUST FASTENER LENGTH TO ACCOUNT FOR UP TO 1" FOAM PLASTIC CONTINUOUS INSULATION.



NICHIIHA HORIZONTAL AWP - HORIZONTAL COMPRESSION JOINT

SCALE: 1 1/2" = 1'-0"