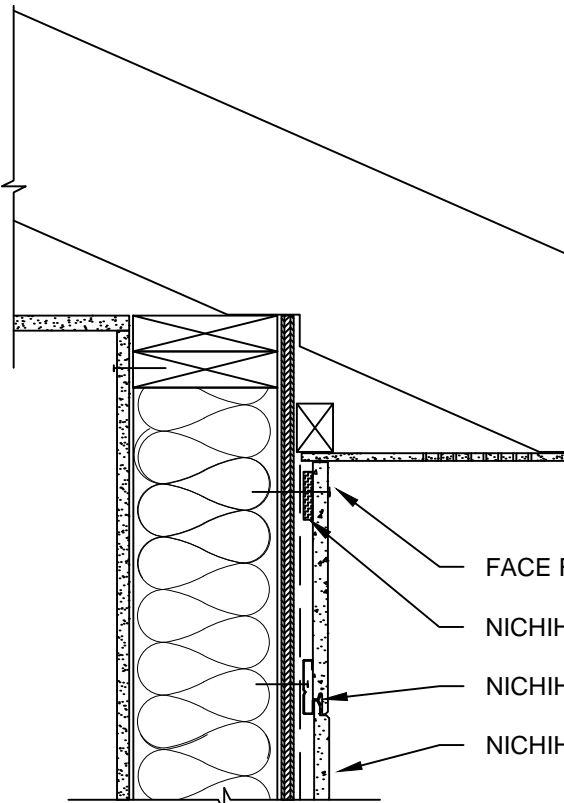


NOTES:

1. THIS CONCEPTUAL DETAIL IS A GUIDE FOR INSTALLATION OF NICHIIHA PRODUCTS. ARCHITECTS/ENGINEERS/CONTRACTORS ARE RESPONSIBLE FOR SUCCESSFUL APPLICATION WHICH DEPENDS UPON SUBSTRATE DESIGN AND CONSTRUCTION BUILT IN ACCORDANCE WITH BEST PRACTICES AND LOCAL BUILDING CODES.
2. SHEATHING REPRESENTED HERE IS 1/2" PLYWOOD OR 7/16" OSB. IF USING OTHER THICKNESSES ADJUST ACCORDINGLY.
3. NICHIIHA PANEL REPRESENTED HERE IS 5/8" NICHIIHA PRODUCT, ADJUST ACCORDINGLY FOR OTHER NICHIIHA PRODUCT THICKNESSES.

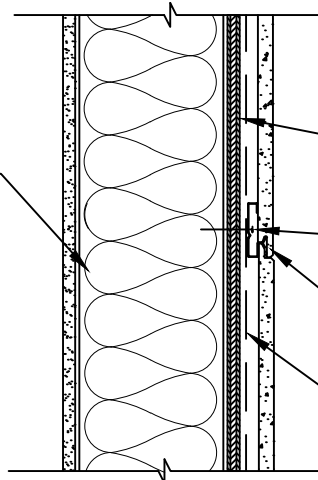
TOP OF PANEL  
DETAIL



- FACE FASTENER
- NICHIIHA SPACER
- NICHIIHA CLIP
- NICHIIHA PANEL

SUPPORT CLIP  
DETAIL

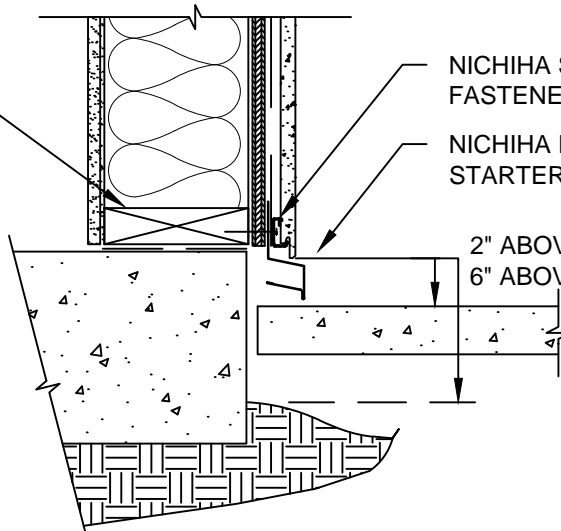
FRAMING MEMBER



- SHEATHING
- CLIP FASTENERS INTO STUDS
- NICHIIHA CLIP LOCATED ON STUD
- WEATHER RESISTANT BARRIER

STARTER TRACK  
DETAIL

SILL PLATE



- NICHIIHA STARTER TRACK FASTENER LOCATED ON STUD
- NICHIIHA ESSENTIAL STARTER FLASHING

2" ABOVE HARD SURFACE OR  
6" ABOVE FINAL GRADE

NICHIIHA HORIZONTAL AWP - WALL SECTION - SOFFIT