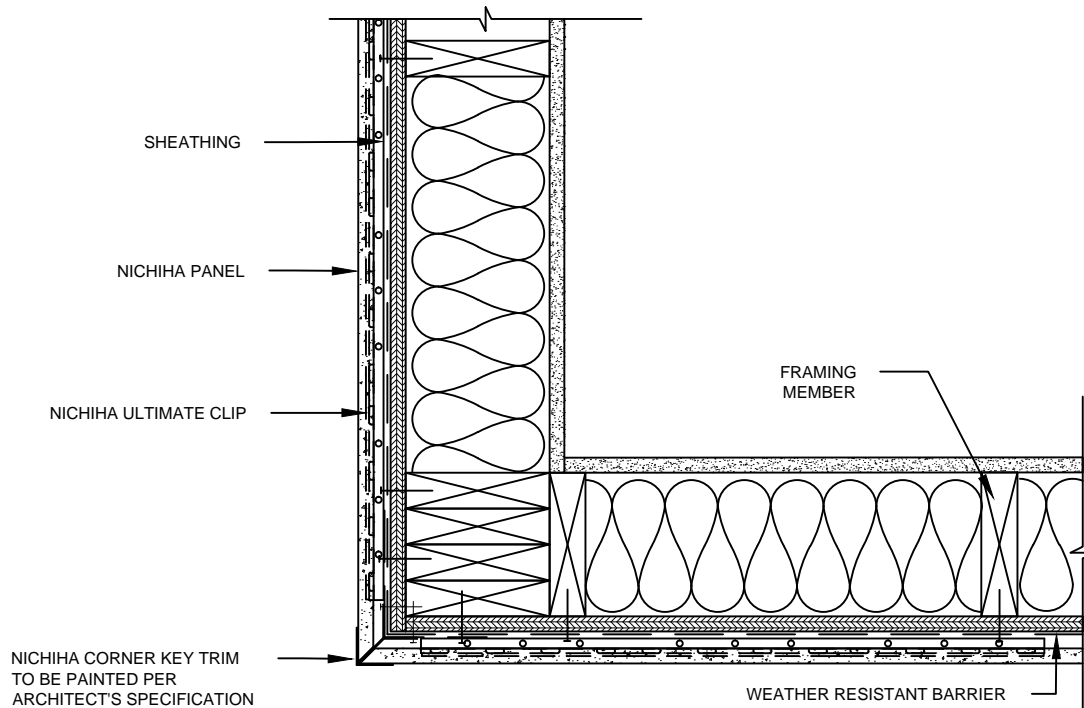


NOTES:

1. THIS CONCEPTUAL DETAIL IS A GUIDE FOR INSTALLATION OF NICHIIA PRODUCTS. ARCHITECTS/ENGINEERS/CONTRACTORS ARE RESPONSIBLE FOR SUCCESSFUL APPLICATION WHICH DEPENDS UPON SUBSTRATE DESIGN AND CONSTRUCTION BUILT IN ACCORDANCE WITH BEST PRACTICES AND LOCAL BUILDING CODES.
2. NICHIIA PANEL REPRESENTED HERE IS 5/8" NICHIIA PRODUCT, ADJUST ACCORDINGLY FOR OTHER NICHIIA PRODUCT THICKNESSES.
3. SHEATHING REPRESENTED HERE IS 1/2" PLYWOOD OR 7/16" OSB. IF USING OTHER THICKNESSES ADJUST ACCORDINGLY.
4. MITER CUT PANEL EDGES TO INSERT FULLY (IN MODERATE CONTACT) INTO TRIM.



NICHIIA HORIZONTAL AWP - OUTSIDE CORNER DETAIL-
NICHIIA CORNER KEY TRIM

SCALE: 1 1/2" = 1'-0"