



ARCHITECTURAL WALL PANELS | AWP1818, AWP3030 | MARCH 2026

# Interior Installation Guide

# AWP1818, AWP3030 INTERIOR INSTALLATION GUIDE

## TABLE OF CONTENTS

GENERAL	2
Product Inspection	3
Storage & Handling	3
Basics of the AWP System	4
Limitations	5
Safety	5
HARDWARE & ACCESSORIES	6
WALL ASSEMBLY REQUIREMENTS	8
Framing & Sheathing	8
Fasteners	9
PENETRATIONS & ATTACHMENTS	10
PANEL LAYOUT DIAGRAMS	11
INSTALLING THE STARTER TRACK	12
Panels Below Starter & Sloped Grade	13
Panels Above Large Openings	14
CORNERS & OPENINGS	15
Inside Corners	15
Outside Corners	16
Metal Trim Corners	17
WINDOWS, DOORS AND PENETRATIONS	18
Window Sills	18
Window/Door Jambs	19
Window/Door Headers	20
FACE FASTENING	21
LAST COURSE	21
<b>AWP1818 HORIZONTAL INSTALLATION</b>	<b>22</b>
<b>AWP3030 HORIZONTAL INSTALLATION</b>	<b>24</b>
<b>AWP3030 VERTICAL INSTALLATION</b>	<b>26</b>
GENERAL PANEL & ACCESSORY	28
Sealing Cut Panel Edges	28
Cutting Ultimate Clips	28
CEILINGS & ANGLED WALLS	29
PANEL REPLACEMENT	32
TECHNICAL RESOURCES	34

## GENERAL

This guide is intended to enable successful installation of Nichiha's 1818 and 3030 Architectural Wall Panels in a horizontal and vertical orientation **for interior applications only. This guide can not be used for exterior applications.** Further installation information and technical resources such as [Technical Bulletins](#), [Three-Part Specifications](#), [product testing](#) and [Certifications, Architectural Details](#) available in AutoCAD and PDF versions, and other technical documents are available on our website: [nichiha.com/resource-center](http://nichiha.com/resource-center).

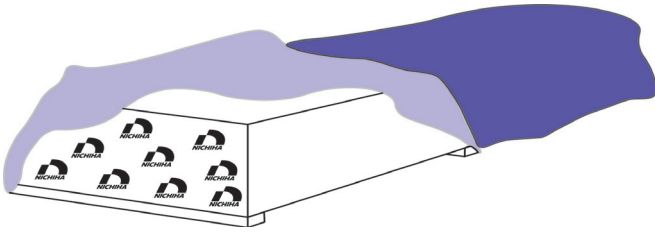
Install products in accordance with the latest installation guidelines and all applicable building codes and other laws, rules, regulations, and ordinances. Review all installation instructions and other applicable product documents before installation. Product building code evaluations for the U.S. and Canada contain critical engineering and installation requirements and must be reviewed.

*This install guide's effective date is March 26, 2026.*

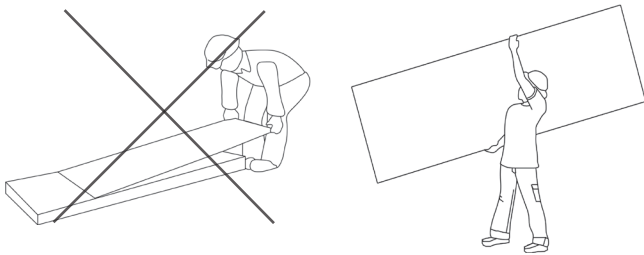
---

## PRODUCT INSPECTION

Inspect all products thoroughly prior to installation. Do not install any product which may have been damaged in shipment or appears to have a damaged or irregular finish. Should you have a question or problem with your order, contact your local dealer.



***Always cover pallets with a breathable tarp or store indoors!***



***Don't unpackage and re-stack panels!  
Always carry panels on edge!***

---

## STORAGE AND HANDLING

AWP are a finished product and care must be taken to protect them against damage prior to and during installation. It is best to store the products indoors, otherwise keep them covered.

Panels must be stored flat and kept dry. Ensure panels are completely dry before installing them. Refer to the storage information included on product pallets. Do not stack pallets more than two high.

Panels **MUST** be carried on edge. Do not carry or lift panels flat. Improper handling may cause cracking or panel damage.

Direct contact between the panels and the ground must be avoided at all times. It is necessary to keep panels clean during installation process.

Cut the panels with the face down.

Always clean panels with a HEPA-Filtered vacuum, soft bristle brush or dry rag after cutting. Dust will bind to the finish.

## BASICS OF THE ARCHITECTURAL WALL PANEL SYSTEM

Nichiha wall panels are available in two sizes: AWP 1818 and AWP 3030. There are unique aspects to each size. It is important to keep in mind the actual metric dimensions when considering panel layouts, and with respect to sizing window and door openings.

When installing panels, be sure to follow the dedicated instructions specific to each size in this guide, distinguished by a color code and listed in page headers/footers. The bulk of this guide is non-color coded and applicable to all AWP.

### AWP 1818

AWP 1818	INCHES	MM
LENGTH	71 - 9/16"	1818
HEIGHT	17 - 7/8"	455
THICKNESS	5/8", 3/4", 7/8"	16, 18, 21

AWP 1818 edges are shiplapped on all sides and a factory sealant gasket is included on the top and right edges. When the panels fit together, all factory joints are sealed. This enables stacked or staggered panel layouts for AWP 1818 only.

*Dimensions are measured from the edges of the panel face, which includes the left (AWP 1818 only) and bottom shiplaps (all panels).*

### AWP 1818 AWP 3030

top shiplap  
(with sealant gasket)

3/8" (10mm) right shiplap  
(with sealant gasket)

### AWP 3030

top shiplap  
(with sealant gasket)

flat vertical edges

17-7/8"  
(455mm)

### AWP 3030

AWP 3030	INCHES	MM
LENGTH	119 5/16"	3030
HEIGHT	17 7/8"	455
THICKNESS	5/8"	16

AWP 3030 edges are shiplapped only on the top and bottom, with the top edge including a factory sealant gasket. Vertical edges for AWP 3030 are flat. Vertical edges for AWP 3030 are flat, requiring sealant Backers or metal trim and allowing only a stacked layout.

Nichiha does not recommend mixing AWP 1818 and AWP 3030 panels on walls that exceed 10 feet in width.

### OVERALL SYSTEM THICKNESS

PANEL THICKNESS	SYSTEM THICKNESS	
	INCHES	MM
5/8" (16mm)	~1"	26
3/4" (18mm)	~1 1/8"	28
7/8" (21mm)	~1 1/4"	31

### AWP ATTACHMENT HARDWARE

Starter Tracks and Ultimate Clips engage the top/bottom panel edges, creating a concealed fastening system. The clip system will create a 10mm (~3/8") air gap between the panel and substrate.

---

## LIMITATIONS & SPECIAL APPLICATIONS

Natural limitations on product usage are inherent to any cladding product's design, physical characteristics, and attachment system. AWP are not to be used in any application/uses not specified or described in this installation guide or other Nichiha technical document.

**THIS GUIDE OUTLINES INSTALLATION METHODS THAT ARE SPECIFIC TO INTERIOR APPLICATIONS, AND CANNOT BE USED ON BUILDING EXTERIORS. ANY SUCH USE SHALL NOT BE BACKED BY THE MANUFACTURER'S PRODUCT WARRANTY.**

Refer to our third party building code certifications: [nichiha.com/resource-center](http://nichiha.com/resource-center).

Please contact Nichiha Technical Services for assistance: [technicalservices@nichiha.com](mailto:technicalservices@nichiha.com)

---

## SAFETY

As with any natural stone, masonry, or concrete based product, when cutting, drilling, sawing, sanding, or abrading fiber cement cladding, proper safety measures must be taken due to the potential for airborne silica dust, an OSHA-identified hazardous substance that can pose serious medical risks.

Nichiha recommends wearing safety glasses and a NIOSH/OSHA approved respirator with a rating of N, O, or P 100. Carefully follow the respirator manufacturer's instructions as well as applicable local governmental safety regulations concerning silica. Refer to [Nichiha's SDS](#) for more information.

Always cut fiber cement panels outside and with a dust-collecting HEPA vacuum system. Do not cut the products in an enclosed area.

Use a dust-reducing circular saw with diamond-tipped or carbide-tipped fiber cement saw blades.

## VOLATILE ORGANIC COMPOUNDS (VOC)

Nichiha Architectural Wall Panels have obtained low-VOC emission certification.

When specifying these panels, please ensure compliance with any VOC regulations in effect. For locally procured touch-up paint, sealants, putty, etc., please use products that conform to local VOC regulations.



# INSTALLATION HARDWARE & ACCESSORIES



## ULTIMATE HORIZONTAL STARTER TRACK

Horizontal Starter Track serves as the foundational support for the AWP system while also providing faster and greater ease of installation.

Horizontal Panels: Starter Track FA700

---



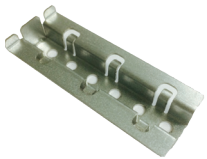
## ULTIMATE CLIP

Ultimate Clips sit on the panel shiplaps, securing AWP to the wall and distributing dead loads to the structure. Together, Ultimate Clips and Starter Track hold the back surface of the panels off the substrate to create a 10mm (3/8") rainscreen space.

JEL778 CLIP Compatible with most AWP

\*\*For Import SandStone and VintageBrick Panels use JEL788 Ultimate Clip.

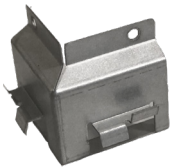
---



## JOINT TAB ATTACHMENT

Joint Tab Attachments are only to be used with the Ultimate Clips and are included with Ultimate Clips. Joint Tab Attachments must be secured within a clip at the bottom of *each AWP 1818 vertical joint* to support panel lateral stability. Fasteners are included for use with the Joint Tab Attachments only.

---



## CORNER CLIP

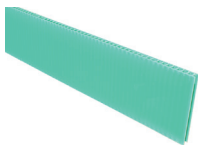
Corner Clips sit on the shiplaps of Nichiha Corners, securing them to the wall and supporting their weight in cooperation with Starter Track.

JE777C Compatible with most AWP Corners

\*\*For Import SandStone and VintageBrick Panels use JE787C Corner Clip.

For all other panels use JE777C Corner Clip.

---



## CORRUGATED SHIM

At termination points where Panel Clips cannot be used, Nichiha Corrugated Shim is required to maintain the rainscreen space and prevent panel deflection at face fastening locations such as window sills and headers.

FS1010 SHIM – 10mm

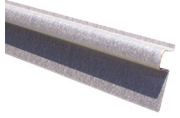
FS1005 SHIM - 5mm

---



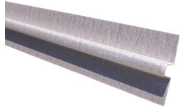
## NICHIHA CORNERS

Nichiha Corners are manufactured mitered panel corners available in the same finishes as horizontally oriented AWP. Corners have 3-1/2" (89mm) returns (face dimension). Corners are not available for Miraia panels.



## SEALANT BACKERS

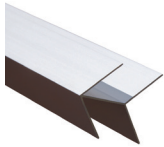
Nichiha Sealant Backers provide exact spacing for expansion and termination joints. They provide faster installation than a foam backer rod and require less sealant. At sealant joints, use a sealant that complies with ASTM C920, Class 35 (min.).



Single Flange Sealant Backer: FHK1015R – 10 mm

Double Flange Sealant Backer: FH1015R – 10 mm

(A)



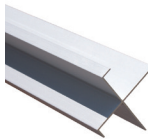
## METAL TRIM OPTIONS

Nichiha metal trim provides aesthetically pleasing design options for corners, openings, and transitions, as well as vertical joints.

(B)



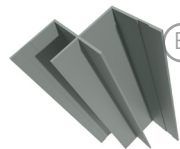
(C)



(D)



(E)



TRIM**	APPLICATIONS
(A) Corner Key	Outside Corners
(B) H-Mold	Vertical Joints - AWP 3030
(C) Open Outside Corner	Outside Corners
(D) J-Mold	Terminations
(E) Inside Corner	Inside Corners

\*\*Be sure to order and use trim channels sized to the appropriate AWP thickness.

# WALL ASSEMBLY REQUIREMENTS

Prior to Nichiha installation, closely inspect the interior wall substrate and correct any problems. Walls that are out of plumb, for example, can negatively impact the installation quality of AWP. Nichiha Shim may be used in conjunction with panel attachment hardware if necessary to ensure an even substrate up to maximum of 10mm.

## HORIZONTAL AWP FRAMING & SHEATHING REQUIREMENTS

Our horizontal AWP system may be attached to wood or steel framing, wood or steel furring, or wood structural sheathing.

All wood structural sheathing must be US DOC PS2- or PS1- rated OSB or plywood, minimum 7/16" thickness.

### WOOD FRAMING/FURRING

Size: minimum 2x4 studs  
Spacing: 16" o.c. max

### STEEL FRAMING/FURRING

Gauge: minimum 20  
Spacing: 16" o.c. max

### CONCRETE/CMU WALLS/ICF

Furring is required for installation of AWP over concrete/CMU/ICF walls.

Wood Furring: lumber 2x4, oriented vertically, spaced 16" o.c. max.

Steel Furring: minimum 20 gauge, oriented vertically, spaced 16" o.c. max.

### STRUCTURAL INSULATED PANELS (SIP):

SIPS sheathing components must meet above wood structural sheathing requirements and be installed in accordance with the manufacturer instructions.

---

## VERTICAL AWP FRAMING & SHEATHING REQUIREMENTS

Our vertical AWP system may be directly attached to wood structural sheathing, wood furring, or steel furring.

All wood structural sheathing must be US DOC PS2- or PS1- rated OSB or plywood, minimum 7/16" thickness.

### WOOD OR STEEL FRAMING

*Structural Sheathing Method*

Framing Size: min. 2x4 wood stud, or 20 gauge

Spacing: 16" o.c. max

Sheathing: min 7/16" OSB/Plywood (US DOC PS2 or PS1 Rated) is required (clips will not align over or intersect the studs).

AWP cannot be fastened directly to gypsum sheathing alone.

### CONCRETE/CMU WALLS/ICF

Furring is required for installation of AWP over concrete and CMU structures.

**Horizontal Furring Method:** Minimum 20ga shaped steel or 2X lumber

For Vertical Starter Tracks: 2X lumber or minimum 20 gauge hat channel, oriented horizontally, placed at all Vertical Starter Track locations

For Clips: hat channel or z furring - minimum 20 gauge, oriented horizontally, spaced 16" max.

### STRUCTURAL INSULATED PANELS (SIP):

SIPS sheathing components must meet above wood structural sheathing requirements and be installed in accordance with the manufacturer instructions.

---

## FASTENERS

The minimum size for Ultimate Clip, Starter Track fasteners is #10. Clip and track screws must have a pan, wafer, or hex head. Bugle head screws are not approved for component fastening.

Min. #8 or larger screws with a bugle head are appropriate for face fastening locations. Refer to the [Face Fastening Best Practices](#) section for face fastening procedure.

Fasteners must penetrate framing or furring per the minimum requirements below.

### WOOD STUDS

Fasteners must penetrate framing member by a minimum of 1".

### METAL STUDS

Screws must penetrate framing member by a minimum of 1/2". A minimum of three threads are needed for effective grab.

## FURRING

Furring into Concrete/CMU: Fastener type, size, and spacing to be determined under direction of an engineer and in accordance with local building codes.

AWP into Furring: Screws must penetrate wood furring a minimum of 1" or steel by 1/2"; three threads are needed for an effective grab.

## WOOD STRUCTURAL SHEATHING AND STRUCTURAL INSULATED PANELS (SIP)

Min. one inch, full-thread, wood screws must be used for system components.

Double fastening per each Ultimate Clip (minimum of 4 screws per clip) is required as there are fewer or no studs to secure the system.

Face fasteners below windows and at the top of the wall are secured at 16" o.c. max.



# PLANNING, PANEL LAYOUT & PENETRATIONS

To ensure a successful installation, it is important to first plan how the panels will be laid out and where large heavy objects will be displayed. Locating studs will be difficult after panels are installed.

Attaching objects directly to AWP is considered at the user's own risk. Panel damage that occurs as a result of attachments is not covered by Nichiha warranty.

## LAYOUTS

AWP 1818 can be installed in either a stacked bond or a staggered bond. AWP 3030 must only be installed in a stacked bond layout.

For details on staggered vertical arrangements, review the Vertical AWP Staggered Panels technical bulletin.

## CUT PANELS

In general, it is best to avoid cutting AWP to short or narrow strips and segments of less than 4". Adjust the layout or use alternate materials when needed to avoid cutting AWP smaller than 4".

## PENETRATIONS

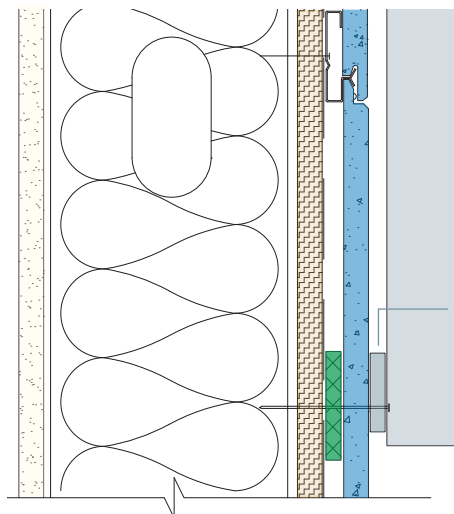
Openings for small penetrations such as pipes or conduits may be cut with a hole saw. For larger penetrations, panels may be cut to fit around the penetration and closed off with a J-mold.

Nichiha system will protrude approximately 1" from the face of the studs/sheathing when installing 5/8" panel using Ultimate Clips. Depth will need to be adjusted for other panel thicknesses or attachment methods. Receptacle boxes and other fixtures will need to take this depth into account.

## BASEBOARDS AND TRIM

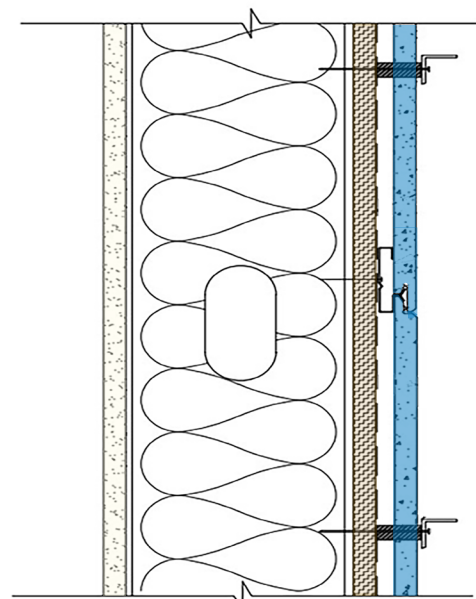
When installing baseboard with AWP, trim can be installed directly to panels with a min 16 gauge finish nailer.

*AWP must not be cut narrower than 4" height or width.*



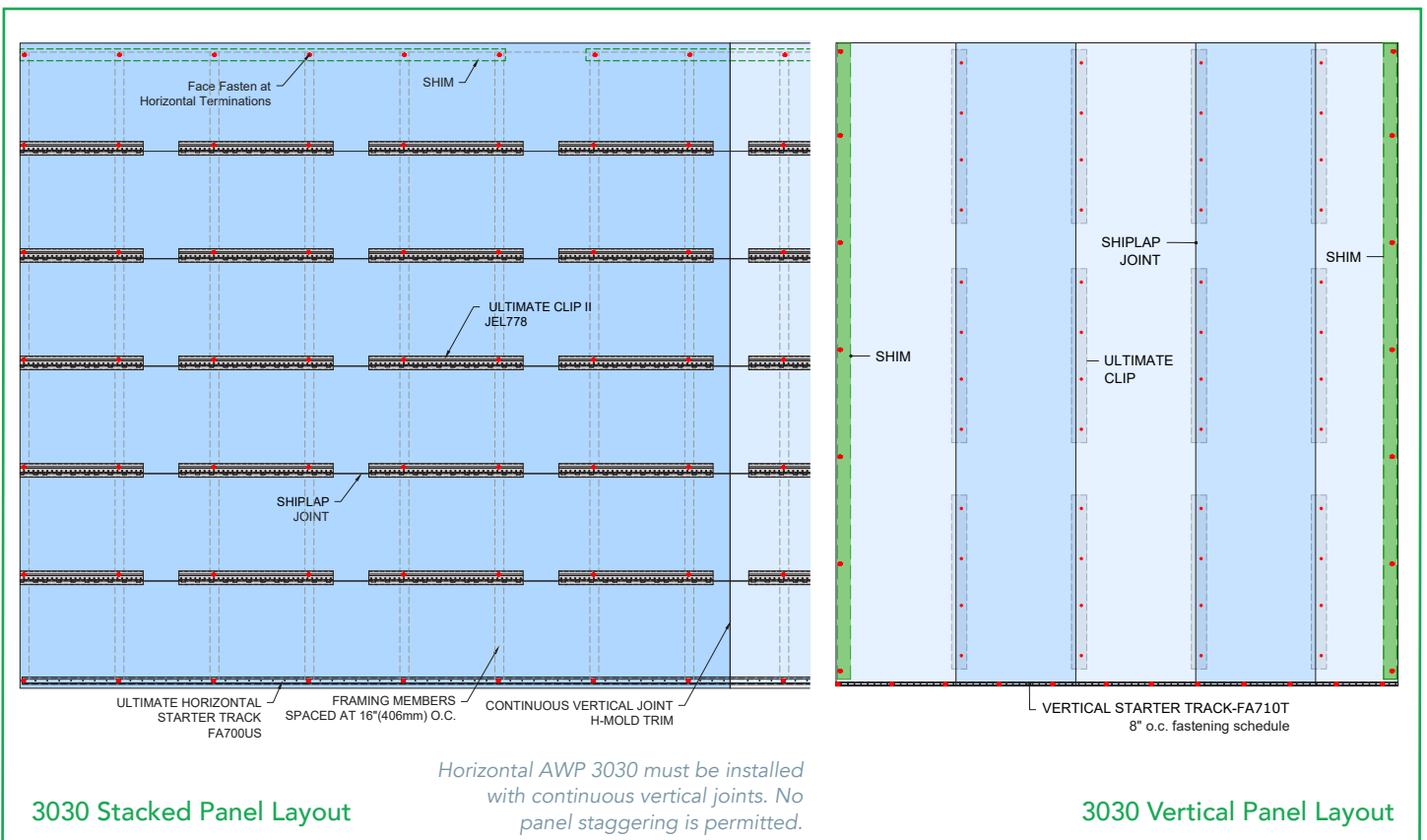
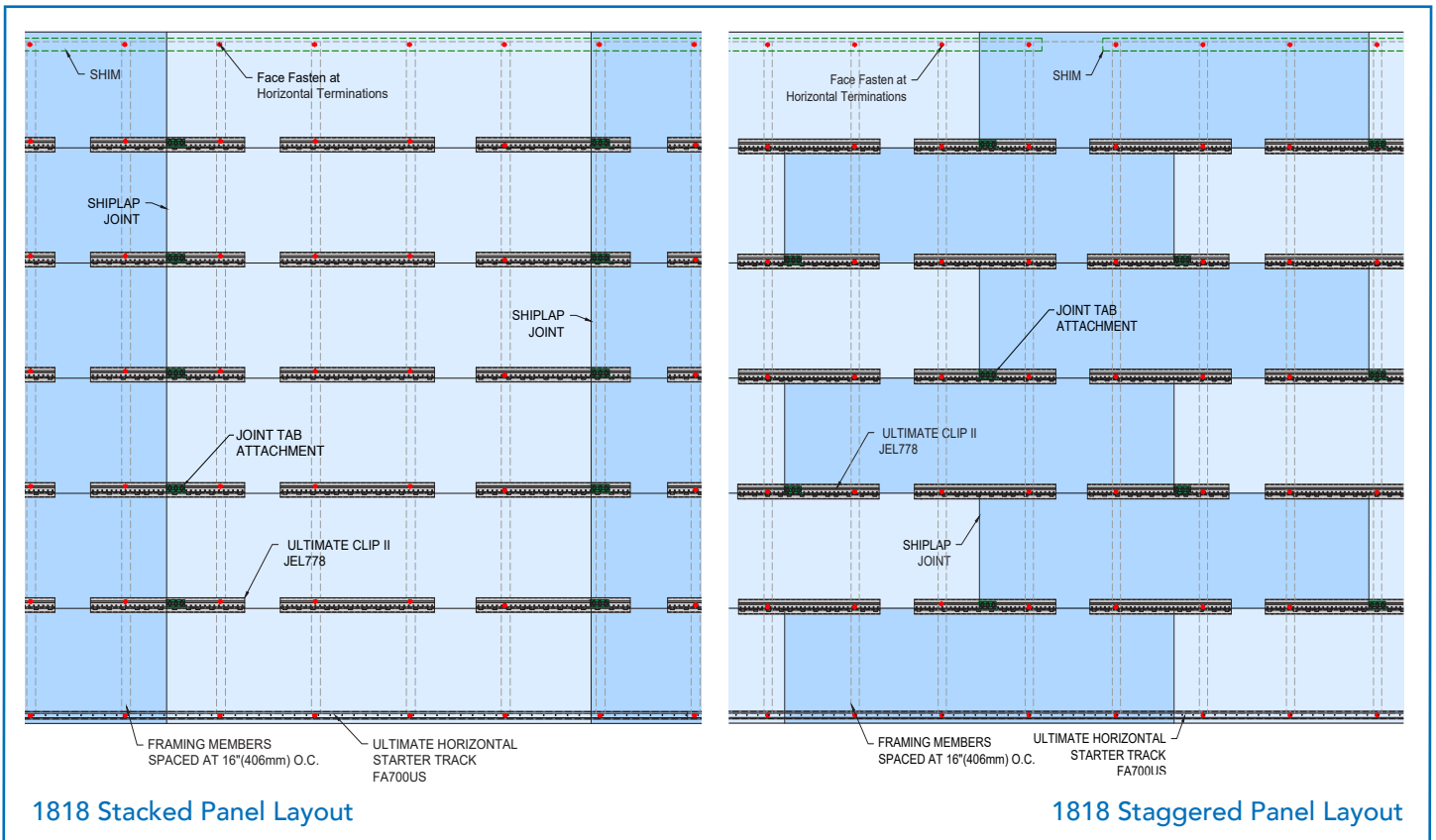
*Signage/TV Mount Detail*

*Signage/Attachment fasteners through shims, AWP, & 10mm Shim into framing/blocking*



*Lightweight Signage Detail*

# STACKED AND STAGGERED PANEL LAYOUTS AWP 1818 & 3030 - HORIZONTAL



# STARTER TRACK:

## *INSTALLING THE HORIZONTAL/VERTICAL ULTIMATE STARTER TRACK*

The Horizontal and Vertical Ultimate Starter Track must be level and installed using screws.

Terminate Starter Track 1/2" short of inside and outside corners unless metal trim is used. If metal trims are used, terminate the Starter Track within 1/2" of the trim's fastening flanges.

---

## HORIZONTAL STARTER TRACK INSTALLATION

Horizontal AWP bottom face edge will extend 3/4" below the Starter Track. This must be taken into consideration when positioning the Starter Track.

Locate and mark the studs.

### WOOD & STEEL STUDS OR FURRING

Starter Track must be secured at every stud line, max. 16" o.c. between fasteners.

### CONCRETE/CMU/ICF

When installing over concrete substrates, the Starter Track must be secured at each furring location. Fasteners must be spaced no more than 16" o.c.

### STRUCTURAL INSULATED PANELS (SIP)

Fasten Starter Track at max. 8" o.c. to wood sheathing layer.

---

## VERTICAL STARTER TRACK INSTALLATION:

### All Applications

When using the structural sheathing method outlined in the Framing & Sheathing Requirements section, 7/16" or thicker US DOC PS2- or PS1-rated OSB or plywood sheathing MUST be used to enable vertical installation of AWP 3030. OSB/plywood shall be secured to building framing or furring in compliance with best practices and local building codes.

Starter Track must remain continuous and level. The Starter Track must be fastened at no more than 8" oc to either wood sheathing, 2X blocking, or horizontal hat channel.

Vertical Starter Tracks are 10 feet long, supporting approximately 500 pounds.



## PANELS BELOW STARTER TRACK - HORIZONTAL AWP

When panel layouts necessitate a partial panel at the bottom of the wall, it is best to add the cut panel below the Starter Track course. This is also true for sloped grade conditions.

Begin with Starter Track at lowest possible continual level line and install it as directed in this guide.

To clad below Starter Track:

Add FS1010 Shim below the Starter Track and at the termination point at the wall base.

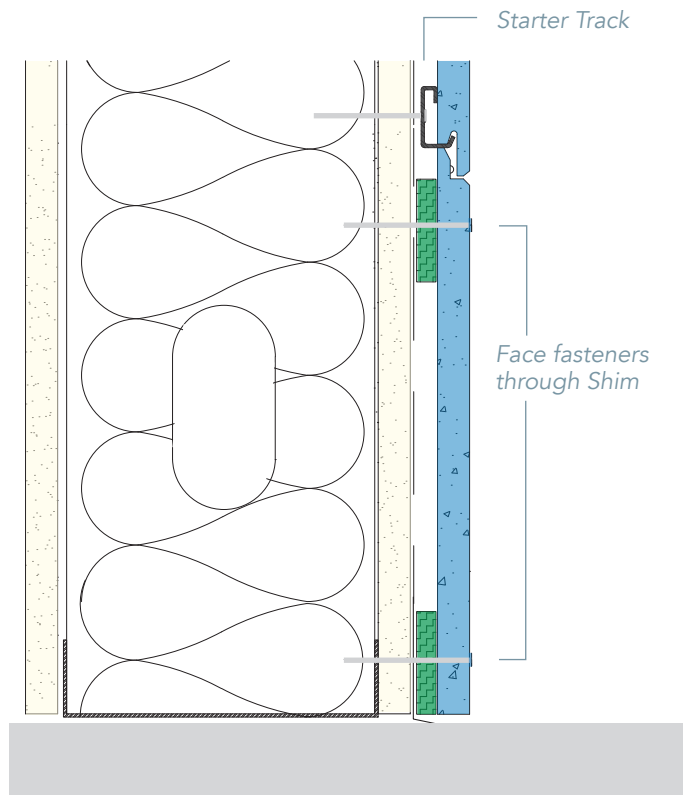
Cut the bottom edge of the partial panel. Insert the top shiplap under the Starter Track. This will form the appearance of a regular horizontal joint with the bottom shiplap of the panel on the Starter Track.

Face fasten the bottom edge of the panel, 1 inch up from the cut edge. Also face fasten the top edge of this panel as shown in the drawing.

## SLOPED GRADE & MULTIPLE PANEL COURSES

If installing more than one course of panels beneath the Starter Track, install the full-sized panels underneath the Starter Track and fasten upside-down Panel Clips to the bottom-edge shiplap, with every framing/furring member covered by a clip. It is necessary to pre-drill fastener holes for clips used upside-down.

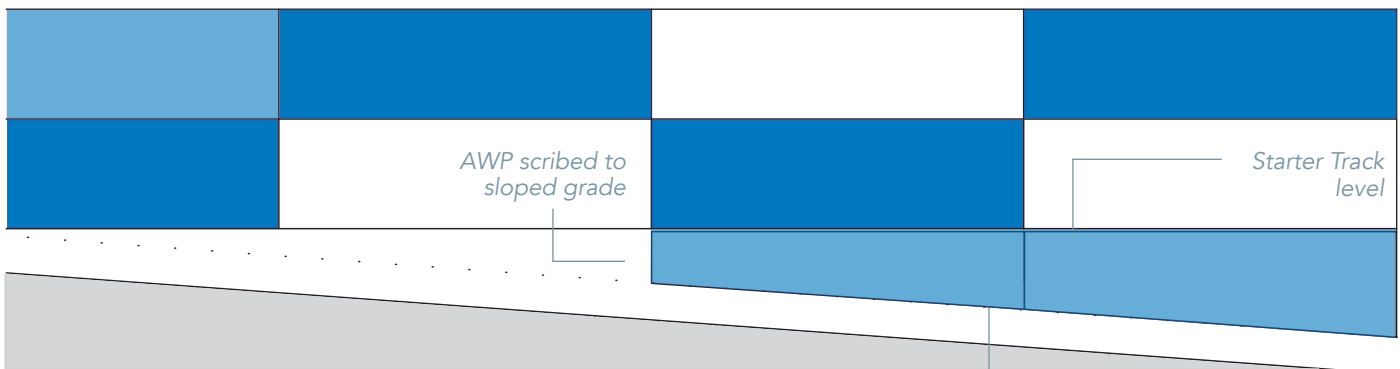
Add remaining courses and fasten with upside-down clips until you reach the final course of panels, which will be cut to size and face fastened.



*Cut, fill-in panel below Starter Track*

Face fasten the top edge of the fill-in panel through corrugated Shim under the Starter Track. Keep fasteners 1" from panel edges.

The same procedure can be followed to install Nichiha Fiber Cement Corners below a Starter Track using Corner Clips.



*Cut, fill-in panels below Starter Track with sloping grade*

*Optional Vertical Starter track here with face fastening*

## PANELS ABOVE LARGE OPENINGS

Large openings (full panel width or wider) such as storefront windows should be taken into account with respect to Starter Track placement. If possible, utilize Starter Track above these large openings to best support the weight of the panels above and for ease of installation.

Install Starter Track above the opening with the normal procedure.

Remember AWP are all 17-7/8" tall and for horizontal AWP the bottom shiplapped edges hang below Starter Track 3/4".

Establish a level line from the bottom of the installed header Starter Track out to the side on both ends with a laser level.

Use this line to measure down the wall on each side of the large opening to attach the Starter Track for the first full panel at the bottom of the wall. This will ensure that the panels will meet at the proper height with respect to the head of the large opening.

If installing a cut panel (bottom shiplap removed) above the large opening, it is recommended to use a vertical starter track (FA710T) above the opening to assist in establishing a level line and ease of installation. Face fastening along the bottom of this panel is still required.

Use the [Panels Below Starter Track](#) procedure on previous page for adding fill-in panels below the wall base.



Make strategic use of Starter Track above and adjacent to large openings to course and align panel joints as desired.

# CORNERS & OPENINGS

ALL APPLICATIONS

## INSIDE CORNERS

There are several Nichiha recommended inside corner installation options:

- Inside Corner Metal Trim
- Fiber Cement and PVC Trim Boards
- Butt Joint

## INSIDE CORNER METAL TRIM

Install Nichiha Inside Corner Trim directly against the inside corner sheathing or framing. Fasten metal trim to corner framing/furring every 16" in a staggered fashion on alternating flanges.

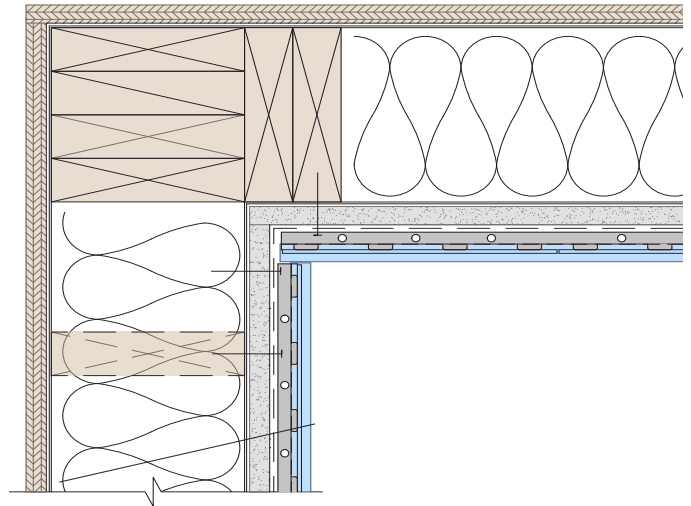
If installing AWP 1818, remove the terminating shiplapped edges, seal the cut, and install panels, butting to the Inside Corner Trim in moderate contact.

## TRIM BOARDS

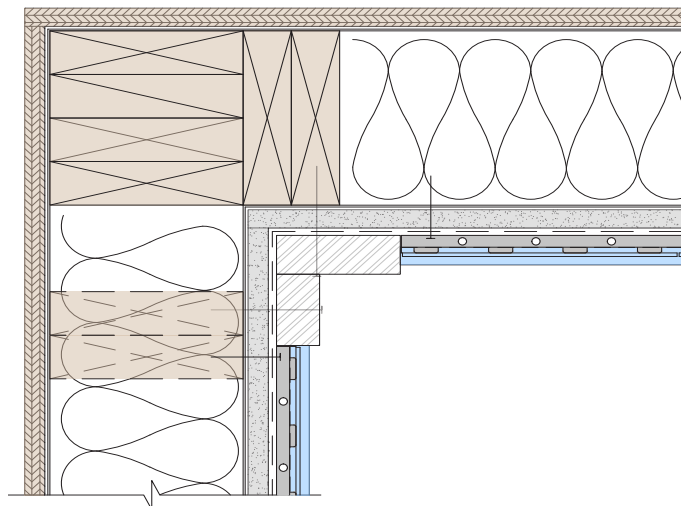
Install trim boards at inside corner first and butt the flat panel edges to the trim, or cap the end of the panel with a J-mold. When installing 5/8" panels using Ultimate Clips the overall thickness of the AWP system is approximately 1". Select a trim thickness that is appropriate to the panel thickness and installation method being used.

## BUTT JOINT PANELS

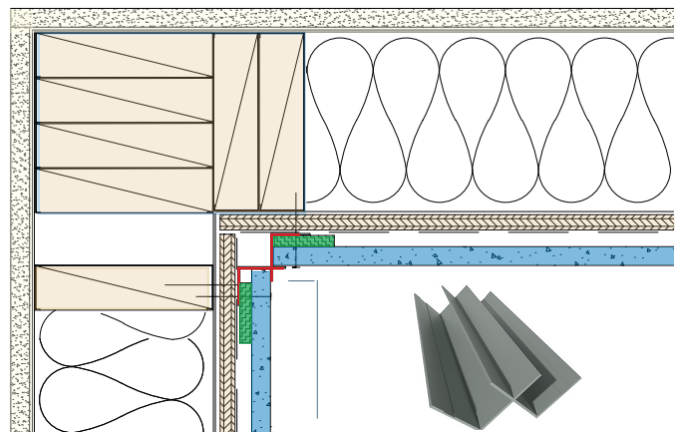
If installing AWP 1818, remove the terminating shiplapped edges. Install the first panel directly against the inside corner sheathing or framing. Butt the second panel directly to the face of the first panel.



Plan view section at an inside corner - butting panels option (Horizontal Install Shown)



Plan view section at an inside corner - butting panels to trim board option. (Horizontal Install Shown)



Inside Corner Trim (Vertical Install Shown)

Nichiha Inside Corner Trim

## OUTSIDE CORNERS

There are several Nichiha recommended outside corner installation options:

- Nichiha Fiber Cement Corners
- Fiber Cement and PVC Trim Boards
- Metal (Open Outside, Corner Key) Trim

### NICHIHA FIBER CEMENT CORNERS

Install Nichiha Fiber Cement Corners prior to panels.

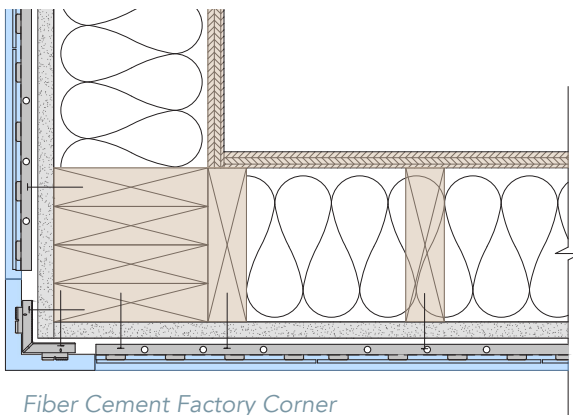
When using Nichiha Corners, terminate the Starter Track 1/2" short of each side of the wall corner. Set a Corner on the Starter Track and secure it with a Corner Clip. Fasten with screws into framing/structure on both sides of the Corner Clip.

Place the next Corner on top of the first, fitting the ship-lapped edges together over the clips. Secure the top edge in the same manner with a Corner Clip. (Figure A, B)

Continue up the outside corner, stacking and securing the Corner pieces.

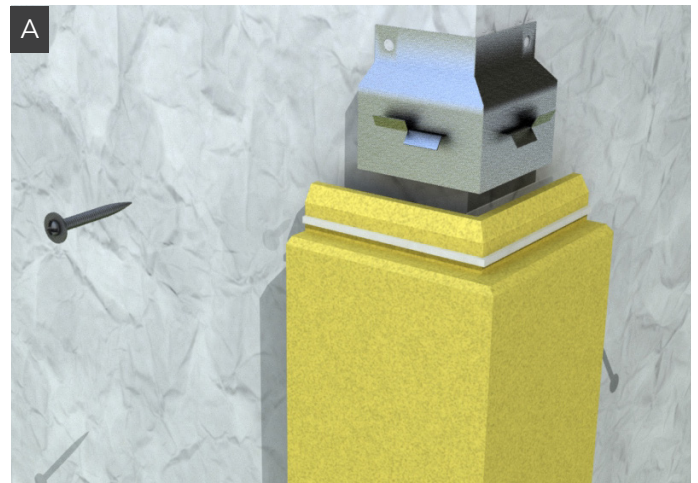
The top Corner will be cut to the appropriate height and face fastened over 10mm Shim. Refer to [Face Fastening Best Practices](#) section.

Once corners are in place, panels can be cut flat and butted against factory corner with moderate contact.

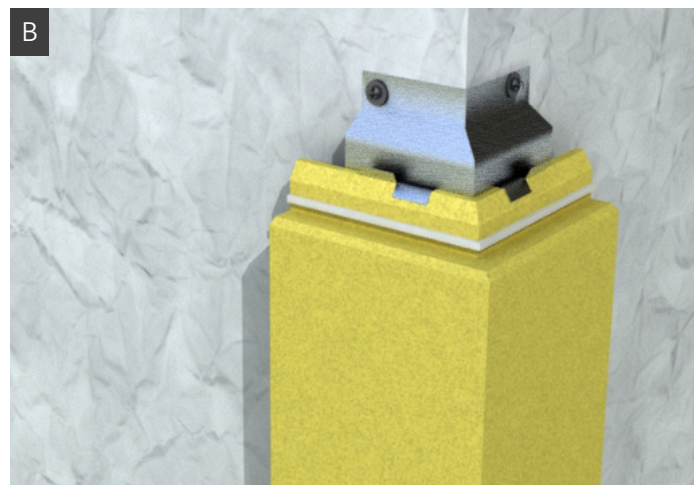


## TRIM BOARDS

If using trim boards made from materials such as fiber cement, PVC, or wood at corners, install the trim boards at the corner first and butt the flat edge of the panel against the trim with moderate contact.



Slide Corner Clips onto shiplap at the top of Factory Corners.



Corner Clips must be fastened on both sides of the corner.

## METAL TRIM CORNERS

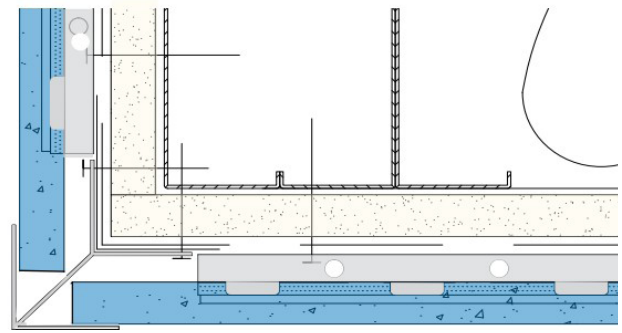
Install trim channels, such as Nichiha Corner Key or Open Outside Corner, prior to Starter Track and panels. Position corner so that the bottom of the corner trim will be in line with the bottom of the panels once installed. Fasten trim with fasteners through the wall mounting flanges every 16" into studs or blocking. Stagger the fasteners on alternating sides.

Cut off terminal panels' shiplapped edges, enabling the cut panel edges to fit fully into the trim channels. Butt the flat panel edges in moderate contact to the center flange of the corner.

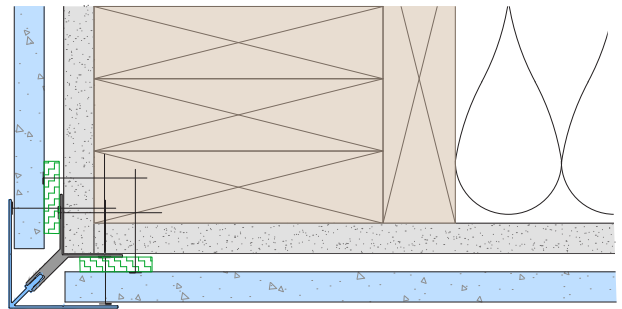
Nichiha metal corner trims are each 10 feet in length.

Nichiha Metal trim can be pre-finished to match any Nichiha panel, including custom colors. For field painting metal trim, it is best to purchase primed trim. Use Direct to Metal (DTM) paint when job site painting. Consult a paint professional for best practices on finishing the primed metal trim.

Open Outside corners are available in one-piece construction. Corner Keys are available in one-piece and two-piece construction. Two-piece Corner Keys are not recommended for use with horizontal panels.



*Metal Trim Corner Key*



*Two-piece Metal Trim Corner Key*

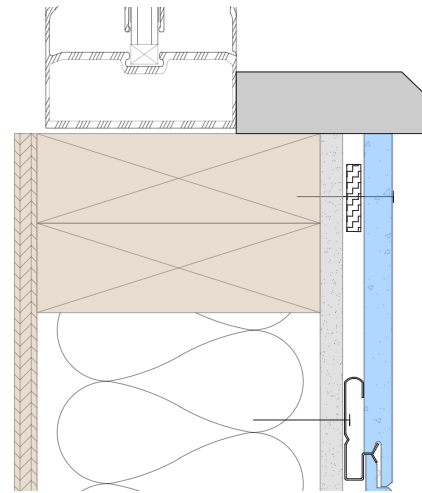
# WINDOWS, DOORS, AND PENETRATIONS

## WINDOW SILLS

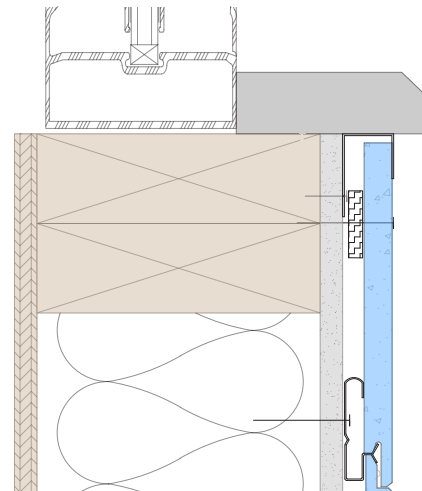
As needed to match the window width, cut the panel to the required height to fit below the window sill.

For horizontal panels, add FS1010 Corrugated Shim (10mm) at the sill. Set the panel on the clips of the panel(s) below and position the panel into place to seat properly. Face fasten panel into each stud or into window blocking. Fasteners must be installed at no more than 16" oc spacing. Refer to the [Face Fastening Best Practices](#) section.

J-Mold type trim (installed before AWP) may be included below window sills if AWP can be slid into position from one side.



*Top edge of AWP butted under sill cap*



*Optional J-Mold*

---

## WINDOW / DOOR JAMBS

### J-MOLD

Pre-install J-Mold trim at window and door jambs prior to AWP. For J-Mold positioning, refer to the window/door manufacturer instructions regarding trim attachments to determine if the J-Mold can be butted directly to the window or door jamb or if a gap is required.

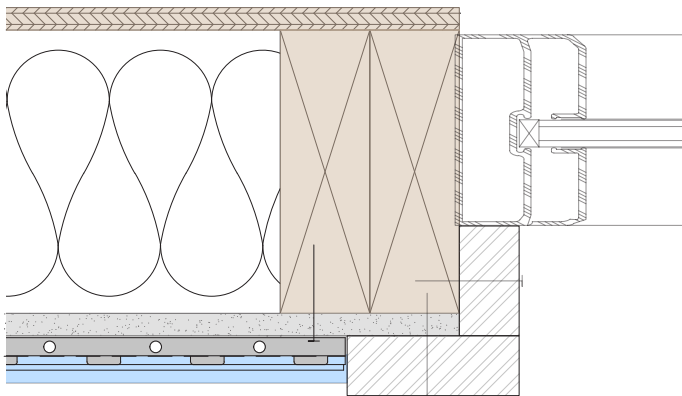
AWP cut vertical edges must fit completely within the J-Mold, leaving no exposed panel edges.

### TRIM BOARDS

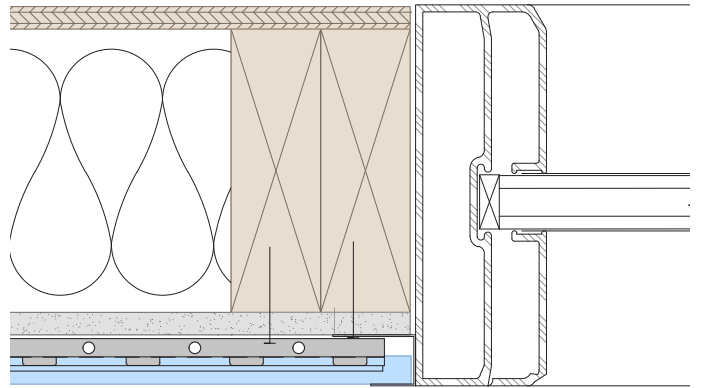
If using trim boards made from materials such as fiber cement, PVC, or wood at corners, install the trim boards at the corner first and butt the flat edge of the panel against the trim with moderate contact.

### RECESSED JAMBS

At recessed openings, the best option for finishing the jamb returns/recesses is with jamb extension accessories from the window or door manufacturer. The extenders must account for the depth of the return, inclusive of the Nichiha system (1-1.25"). With these in place, butt joint or J-Mold steps can be followed.



Wood Trim



J-Mold

---

## WINDOW/DOOR HEADERS

### OPTIONS FOR HEADERS:

- J-Mold Trim
- Two-Piece Metal Trim Corners

### HORIZONTAL APPLICATION:

When starting a course of full-size panels above a window or door, install Horizontal Starter Track at the header. Starter Track must be fastened at each framing/furring member or into header framing, every 16" max. Proceed with installing panels onto Starter Track.

When adding a cut panel above the opening, install 10mm corrugated Shim. Face fasten panels every 16" to the header framing or at each vertical framing/furring member, 1" from the edge of the panel. Vertical Starter Tracks can also be utilized to improve alignment when installing multiple cut panels.

### FOR VERTICAL APPLICATIONS:

Starter Track: When starting a course of vertical panels above a window or door, add flashing and FA710T Vertical Starter Track at the header, installed with fasteners every 8" into the opening header.

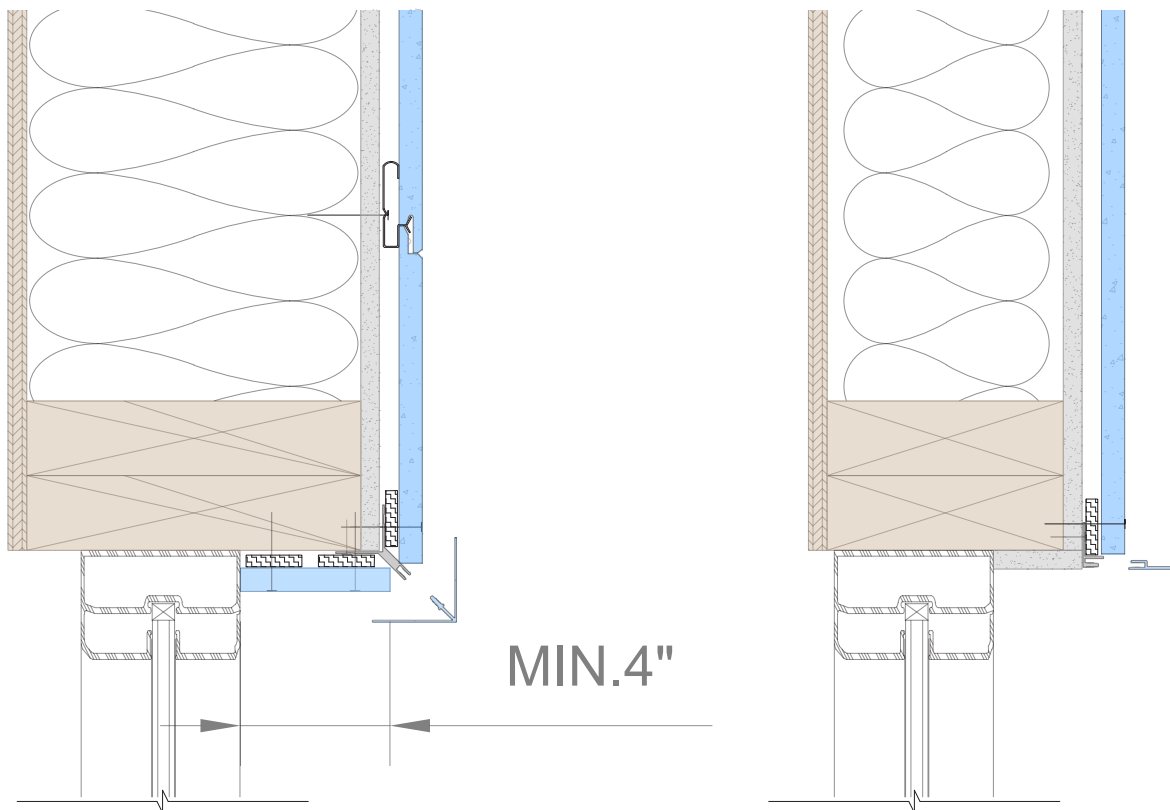
### RECESSED WINDOWS:

AWP can be installed along the header of a recessed window. Recess must be deep enough to allow a minimum 4" panel width. Narrow panels may need to be fully face fastened using two rows of fasteners spaced every 16" into the header framing, located 1" from each edge of the panel.

For deeper recesses, use the installation methods described in the [Ceilings](#) section.

### METAL TRIMS:

J-mold trims (one or two-piece) or metal corner trims (two-piece only) should be used to conceal cut panel edges.



*Two-piece Metal Trim Corner Key at Header*

*Two-piece J-mold Trim at Header*

---

## FACE FASTENING BEST PRACTICES

To minimize the appearance of face fasteners, utilize the following steps:

Apply low adhesive tape such as painters tape to the panel at face fastening locations.

Pre-drill panels a minimum 1" from the cut edge to be face fastened. It is recommended to use a bi-metal countersink drill bit matching the head diameter of the face fasteners.

Fill counter-sunk fastener holes with an interior patching compound.

Use a high grade acrylic latex paint to conceal the patched area.

It is very important to keep the paint to the patched hole area only. Feathering the paint into a large area can negatively highlight the fastener locations.

Remove the painter's tape only after applying the patch or touch up paint.

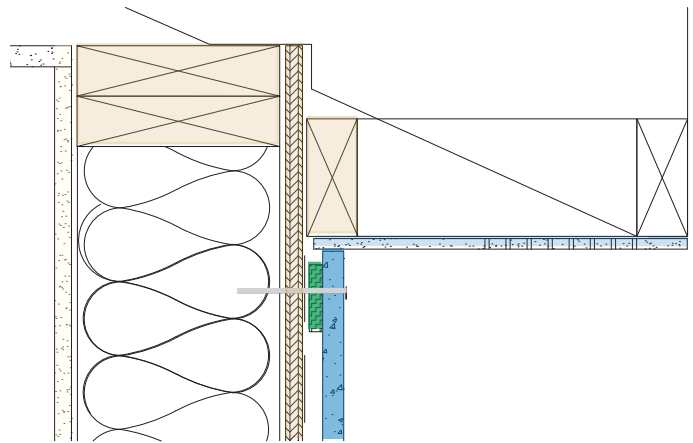
---

## LAST COURSE

### ALL APPLICATIONS

10mm shim (FS1010) must be fastened to the wall along the termination line prior to placing the last panel.

Cut the panels to properly fit at the termination line. Face fasten the panel through the shim at no more than 16" O.C.



*Horizontal AWP Ceiling Termination Detail*



# AWP 1818

## HORIZONTAL PANEL INSTALLATION

Our horizontal AWP system may be attached to wood or steel framing, wood or steel furring, or wood structural sheathing. If installing over gypsum sheathing, fasteners must be installed into framing members. See [Framing & Sheathing Requirements](#).

Panels may be installed directly to studs without the use of sheathing where required (Figure 23F). Note that 1/2" gypsum sheathing may be required by code if continuous insulation is used on the exterior of the wall.

AWP 1818 installation proceeds by working from left to right. Metal trims or factory corners should be installed prior to beginning panel installation.

For AWP 1818, trim off the left side ship-lapped edge so the first panel will fit in moderate contact against any inside or outside corner element.

Set the first panel into the Starter Track and secure the top edge with an Ultimate Clip, placing the first clip approximately 1" from the left edge of the panel (Figures 23A & 23B). See [Fasteners](#) section for required fastening schedule for Ultimate Clips.

Proceed along the panel to the right, placing another clip 4-6 inches from the end of the previously installed clip. When studs are present, each clip will cover 2 adjacent studs and must be fastened to each. Ultimate Clips may be cut as needed to maintain appropriate spacing between adjacent clips. Refer to [Cutting Ultimate Clips](#) section.

Place the second panel next to the first, making sure the shiplap joint fits tightly together. A rubber mallet or block of wood may be used to seat the panels firmly in place and tighten to the left. Do not hammer directly anywhere on the panels as direct contact may cause cracks, gouges, or chipping (Figure 23C). Vertical joints must be spanned with a clip covering the top edge of where the panels meet (Figure 23D).

Verify that the first course of panels is level. Checking level around the entire room will be necessary.

Start the second row in the same fashion as the first, but in addition to previous steps, install a Joint Tab Attachment against the bottom-right corner of each panel. The Joint Tab Attachment seats into the Ultimate Clip, and includes a tab that extends outward. This tab must be installed against the right-hand edge of the panel to prevent lateral motion of the panels along the Ultimate Clips.

Fasten the Joint Tab Attachment to the Ultimate Clip using the provided fasteners (Figure 23E). Only one fastener is required per Joint Tab Attachment.

Fit panels tightly together on both horizontal and vertical joints, ensuring the panel edges are properly seated together.

Complete the second and remaining non-terminal rows in the same manner, including the use of Joint Tab Attachments. Terminal rows at the top course require face fastening. For details on installing the final row of panels, refer to the [Last Course](#) section of this guide.

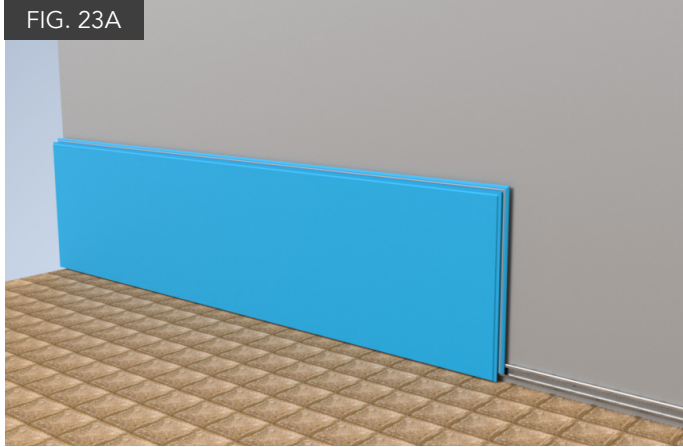


FIG. 23A

Ensure that panels are fully seated on Starter Track.

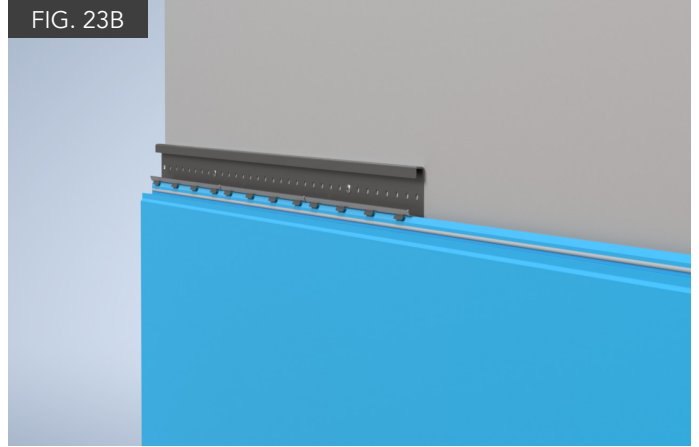


FIG. 23B

Install Ultimate Clips on the panel shiplap and fasten to the wall.

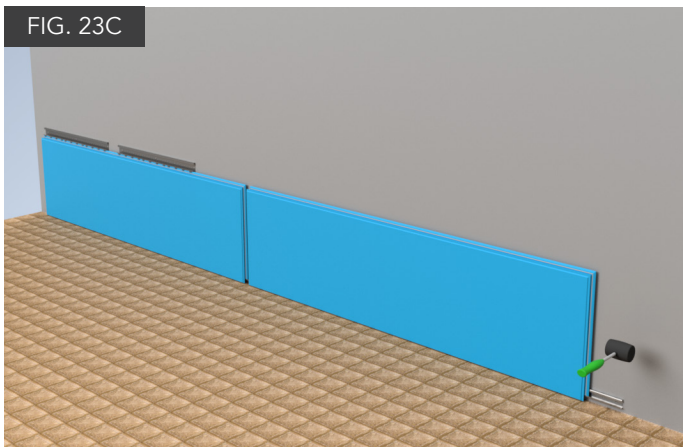


FIG. 23C

Shiplaps must be fully engaged at all joints.

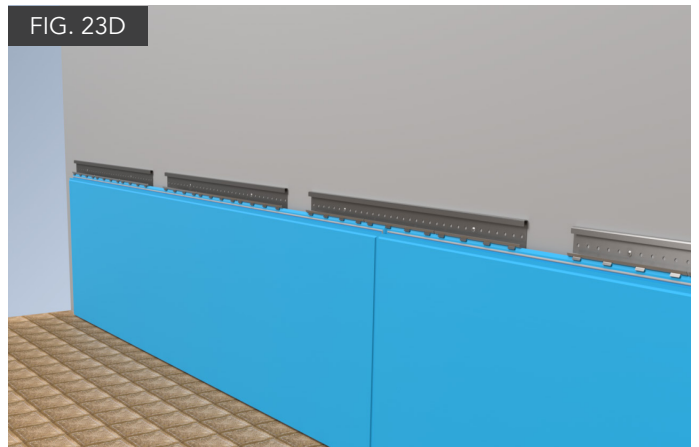


FIG. 23D

Panel joints must be spanned by an Ultimate Clip.

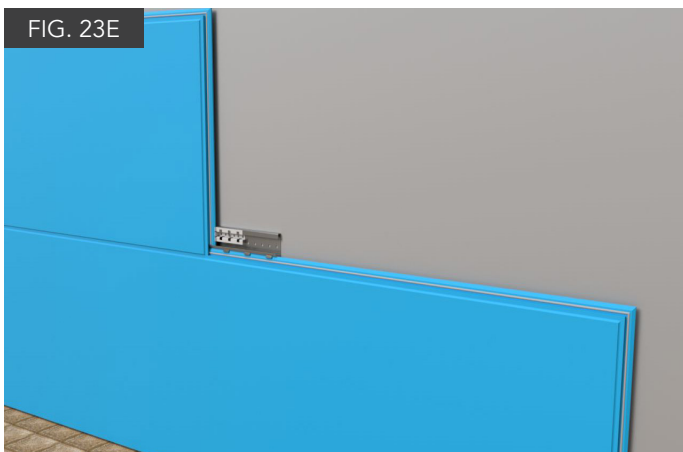


FIG. 23E

Joint Tab Attachment is required after each panel, beginning with the second row of panels.



FIG. 23F

Direct to stud option

## AWP 3030 HORIZONTAL PANEL INSTALLATION

Our horizontal AWP system may be attached to wood or steel framing, wood or steel furring, or wood structural sheathing. If installing over gypsum sheathing, fasteners must be installed into framing members. See [Framing & Sheathing Requirements](#).

Panels may be installed directly to studs without the use of sheathing if required. Note that 1/2" gypsum sheathing may be required by code if continuous insulation is used on the exterior of the wall.

For AWP 3030, the left and right panel edges are flat and do not require initial cutting. Metal trims should be installed prior to beginning panel installation.

Joint Tab Attachments (included with all Ultimate Clips) are not used for AWP 3030 installation.

The first panel will fit in moderate contact against any inside or outside corner element.

Set first panel into the Starter Track and secure the top edge with an Ultimate Clip, placing the first clip approximately 1" from the left edge of the panel. See [Fasteners](#) section for required fastening schedule for Ultimate Clips.

When fastening to studs, do not skip any studs and Ultimate Clips must be fastened to 2 separate studs.

Proceed along the panel to the right, placing additional Ultimate Clips 4-6 inches from the end of the previously installed clip. When studs are present, each clip will cover 2 adjacent studs and must be fastened to each. Ultimate Clips may be cut as needed to maintain appropriate spacing between adjacent clips. Refer to [Cutting Ultimate Clips](#) section.

H-Mold metal trim must be used at vertical joints for horizontal AWP 3030. This trim must be fastened to framing, blocking, 20 ga. strapping or OSB/Plywood sheathing. Fasten metal trim every 16" vertically. H-mold trims are available in one-piece and two-piece construction (*Figure 25C & 25D*).

**Note:** Two-piece H-mold trims are strongly recommended for interior applications. Using one-piece H-mold trims typically requires sliding in panels from the top of the wall, which may not be possible due to ceiling clearance.

Install center flange of the H-mold in moderate contact with the first panel (*Figure 25A*).

Install the next panel with moderate contact to the H-mold trim. Secure the panel with clips at each stud location.

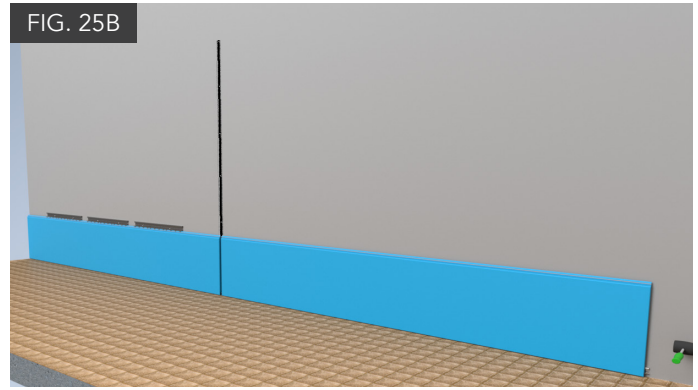
Verify the first course of panels is level before proceeding to the second row of panels. Checking level around the entire room will be necessary.

Complete the second and remaining non-terminal rows in the same manner. Fit panels tightly against trim at all joints. A rubber mallet or block of wood may be used to seat the panels firmly in place and tighten downward (*Figure 25B*).

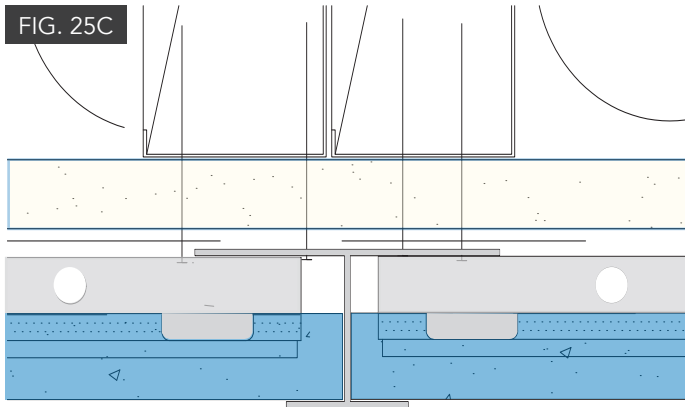
Terminal rows at the top course require face fastening. For details on installing the final row of panels, refer to the [Last Course](#) section of this guide.



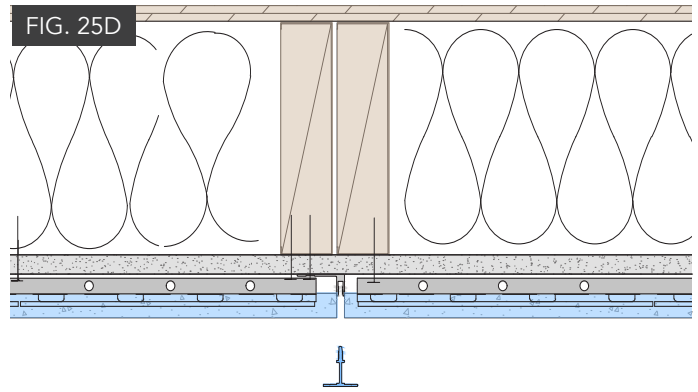
Use H-mold trim at vertical panel joints. Two-piece option shown.



Ensure panel is fully seated in track and against H-mold.



H-Mold trim at AWP 3030 vertical joint



Two-piece H-Mold trim at AWP 3030 vertical joint

# AWP 3030 VERTICAL PANEL INSTALLATION

*For vertical AWP, wood sheathing or furring is required for install, as the 17-7/8" panel width will not align with 16" oc framing. Refer to [Framing & Sheathing Requirements](#) section for wall assembly requirements. Wall surfaces must be flat.*

Metal trims should be installed prior to beginning panel installation.

Vertical AWP can be installed right-to-left or left-to-right, but panels must be oriented so that the factory gasket is along the leading edge.

Remove the bottom non-gasketed shiplapped edge (*Figure 26*). This flat edge will be installed against a corner or other starting location to begin the first row of panels. If necessary, cut the panel to the proper height of the area(s) to be clad. Clean dust from cut panels with a dry, soft cloth or HEPA vacuum.

Prior to installing the first vertical panel, add 10mm corrugated Shim at the wall edges at starting and termination locations (*Figure 27A*). The Shim should extend upwards to match the full height of the panel.

Set the short panel edge on the FA710T Vertical Starter Track. The cut edge should butt to the corner/starting point and will cover the 10mm Shim. Secure the panel by adding the first Ultimate Clip on the shiplapped, factory edge no more than 1" above the Starter Track. Refer to [Fasteners](#) section for fastener requirements and best practices, noting that 4 screws per clip will be required when fastening to sheathing. (*Figure 27B*).

Face fasten the cut edge, installing a fastener every 16" max. Keep screws a minimum 1" from the panel edge (*Figure 27B & 27C*). Refer to the [Face Fastening Best Practices](#) section.

On the shiplapped edge with gasket, add additional Ultimate Clips evenly spaced along the edge of the panel, fastening clips to the plywood/OSB sheathing. Use 4 full clips for a full-size AWP 3030 panel, leaving 4-6 inches of space between clips.

Position the highest clip no more than 1" down from the top edge of panel. Ultimate Clips may be cut as needed to maintain appropriate spacing between adjacent clips. Refer to [Cutting Ultimate Clips](#).

Install the next panel with its shiplapped edges intact. A rubber mallet or block may be used to seat panels firmly in place and tighten together on vertical joints. Do not hammer directly on the panels as direct contact may cause cracks, gouges, or chipping. Install Ultimate Clips as with the first panel, each with four screws.

Continue installing until reaching a termination or transition point. The top (gasketed) factory edge must be removed from the last panel (*Figure 26*), and this cut edge must be face fastened over 10mm Shim. Space the fasteners every 16" vertically, with a minimum 1" distance from the cut vertical edge.

Note: For details on staggered vertical arrangements, consult [Vertical AWP Staggered Panels](#) technical bulletin.

FIG. 26

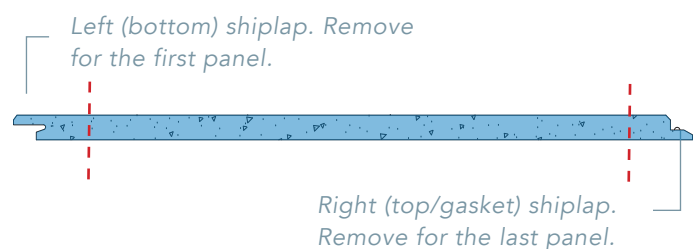
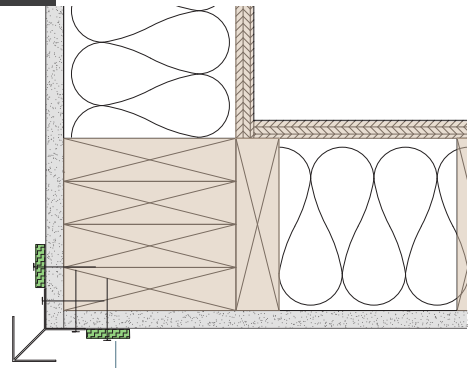
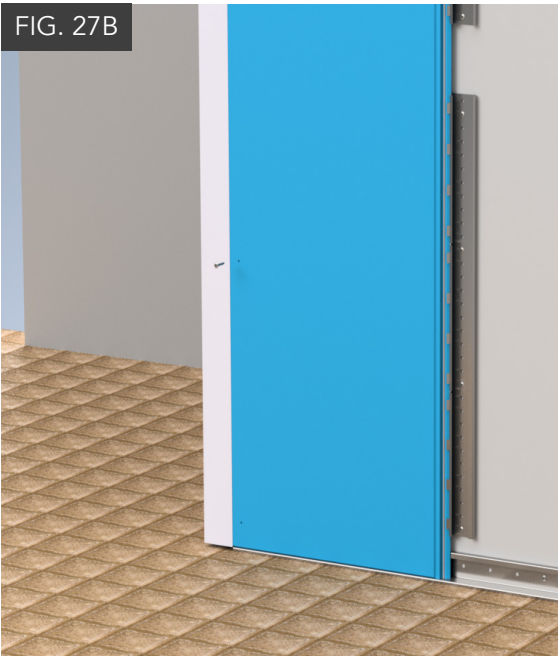


FIG. 27A



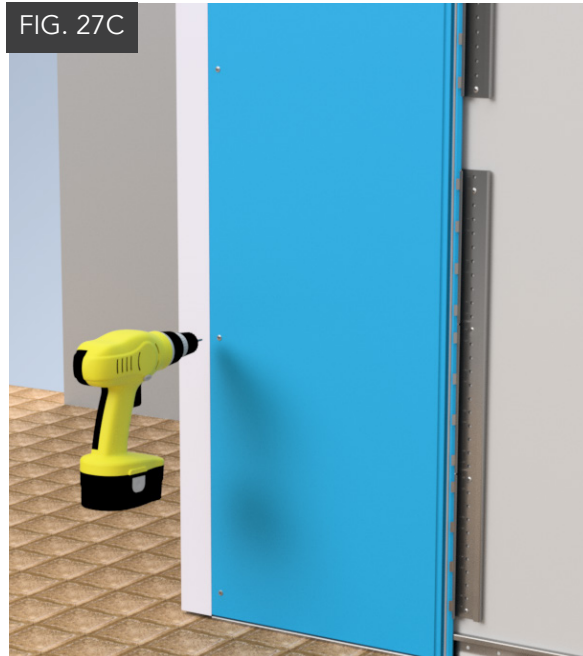
Begin vertical panel runs with a Nichiha 10mm shim.

FIG. 27B



Place panel on Starter Track and install first Ultimate Clip.

FIG. 27C



Face fasten the cut edge of the panel.

# GENERAL PANEL & ACCESSORY BASICS

## PANEL SELECTION

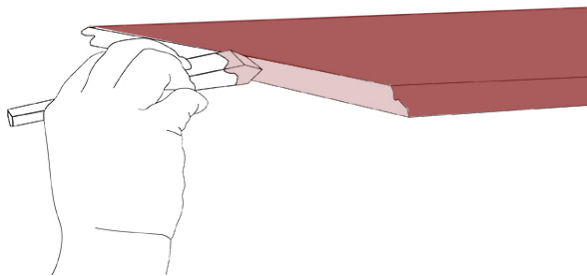
Nichiha AWP are packaged with two panels in a pack, which are placed on pallets consisting of two stacks. Due to alternating patterns of texture and color between individual panels as well as how the panels are manufactured and packaged, it is best to install all panels from each individual stack before installing panels from the second stack on the same pallet. Do not alternate installing from one stack and the second, which may result in undesirable patterns.

## SEALING CUT PANEL EDGES

When cutting AWP, it is best to cut with the panel face down.

Cut panel edges may be sealed. A color matched acrylic latex paint is highly recommended. No oil based paints.

Do not use supplied touch up paint for edge sealing as there will not be sufficient supply for the project. *Be sure to clean panels with a clean, dry soft cloth or HEPA vacuuming after cutting to prevent dust from bonding to the finish.*



## CUTTING ULTIMATE CLIPS

JEL778 Ultimate Clips are 26" long. Where full length clips can be used, they are required. However, there may be conditions where clips must be cut to accommodate shortened panels such as around windows.

Notches on the upward panel engagement flanges indicate where clips can be cut evenly into thirds. These 1/3 segments can be further reduced evenly into two or four pieces each with weep holes serving as dividing points. The smallest segment must include at least one downward panel engagement flange. Always use the widest clip segment possible. Cut clips with a non-ferrous saw blade on a band or chop saw.



# CEILING & ANGLED (NON-VERTICAL) APPLICATIONS

Nichiha Architectural Wall Panels may be used in ceiling or angled wall applications when installed in strict accordance with the following provisions and requirements. Nichiha is not responsible for any actions or defects incurred as a result of incorrect installations using AWP as ceiling. Those opting to deviate from these installation procedures incur all responsibility for their actions and any defects that occur as a result.

## GENERAL REQUIREMENTS

If applicable, remove existing ceiling materials and sheathing to accommodate blocking and required face fastening detailed in these instructions. Do not install AWP over existing ceiling finishes.

Framing must be oriented perpendicular to the direction of panel install and spaced no more than 16" o.c.

To install panels parallel to the framing, a layer of blocking consisting of minimum 2X4 lumber or 18ga steel hat channel, spaced no more than 16" o.c. must be installed over the framing prior to panel installation.

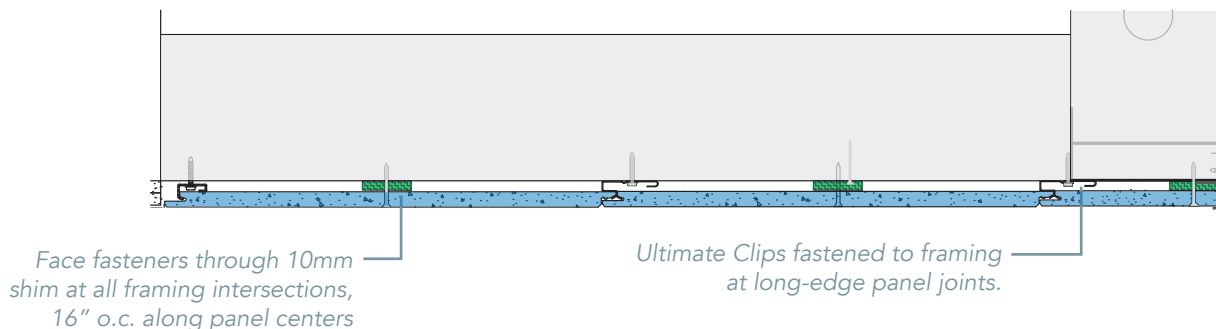
Nichiha AWP hardware (clips and tracks) must be used in the typical fashion for ceiling and angled wall panel installations. In addition, face fastening is required at each framing member along the centerline of each panel (*Figure 29*).

Refer to [Fasteners](#) section for fastener requirements.

Joint Tab Attachments are not required when installing AWP 1818 panels in a ceiling condition. Centerline face fasteners will prevent lateral motion of the panels.

Do not fasten attachments directly to AWP installed on ceilings or angled walls.

### FIGURE 29 (AWP 1818 AND AWP 3030)



## PROCEDURES

Begin ceiling installation by planning panel layout and installing 10mm shims where the centerline face fastening of each panel course will occur.

At the wall-ceiling intersection, there are two options to secure the first edge of AWP:

1. Starter Track: Position the track to allow space for the AWP shiplap edge which will extend 3/4" past the track. Fasten the track to framing every 16".
2. Remove the panel shiplap and face fasten through 10mm Shim, keeping screws 1" from the panel edge.

Ensure starter track and panels are horizontal/level. Check with a laser level regularly.

If additional courses of panels will be utilized, add Ultimate Clips to the panel edges in the same fashion as normal/vertical wall installation. Fasten Clips to framing every 16". Ensure panel edges are fully seated within the clips and joints are closed in moderate contact.

Along the centerline of each panel course, face fasten at framing members every 16" o.c.

The terminal edge must be cut and secured via face fasteners through 10mm Shims. Add screws every 16", keeping 1" from the cut edge. Refer to and follow [Face Fastening Best Practices](#). J-Mold trim may be utilized at terminations.

Ceiling vents may be added to or used in conjunction with ceiling panels.

Layout diagrams for AWP 1818 and AWP 3030 are shown on the following page.

FIGURE 30A (AWP 1818)

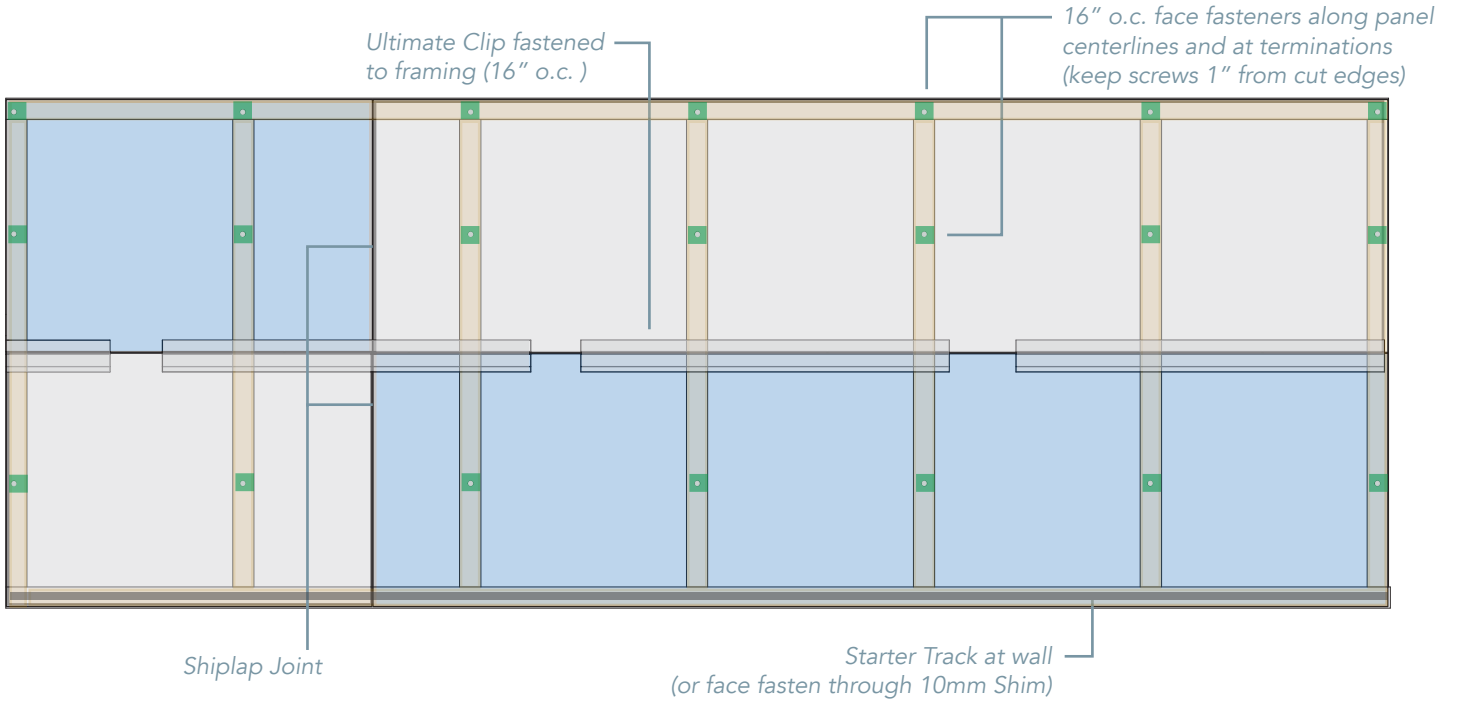
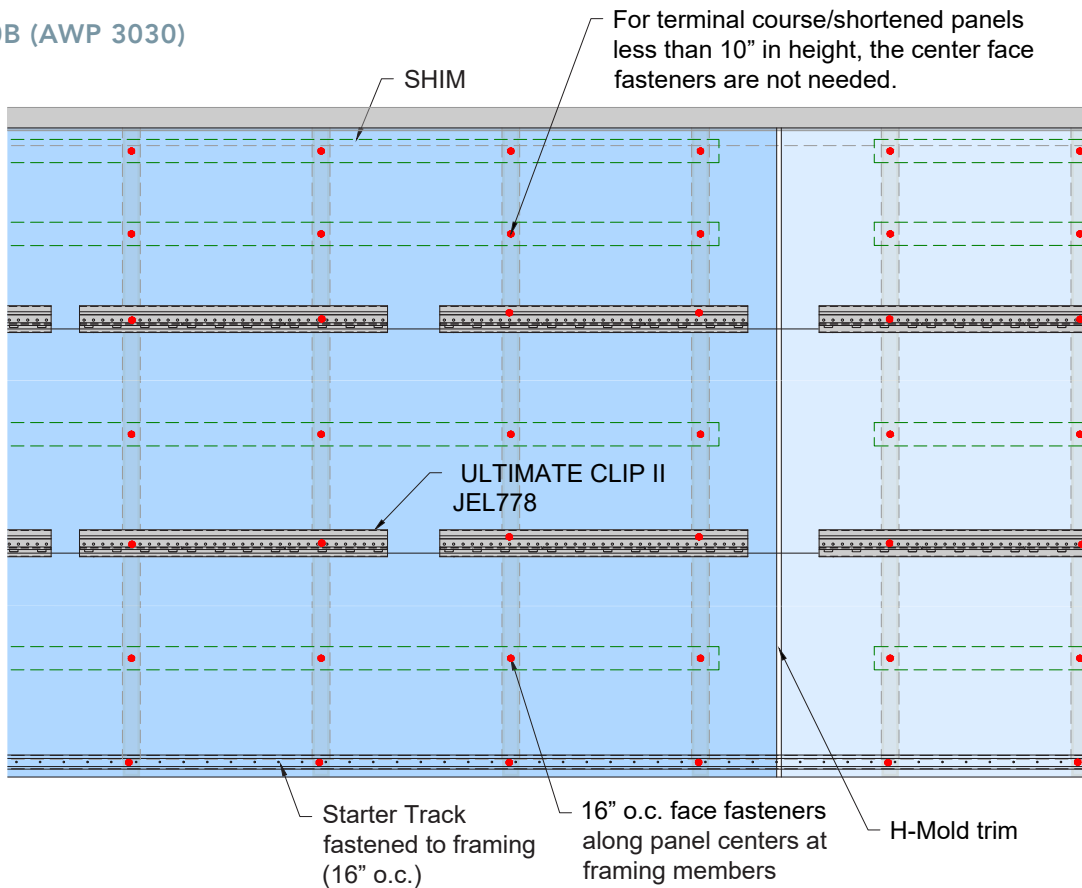


FIGURE 30B (AWP 3030)



---

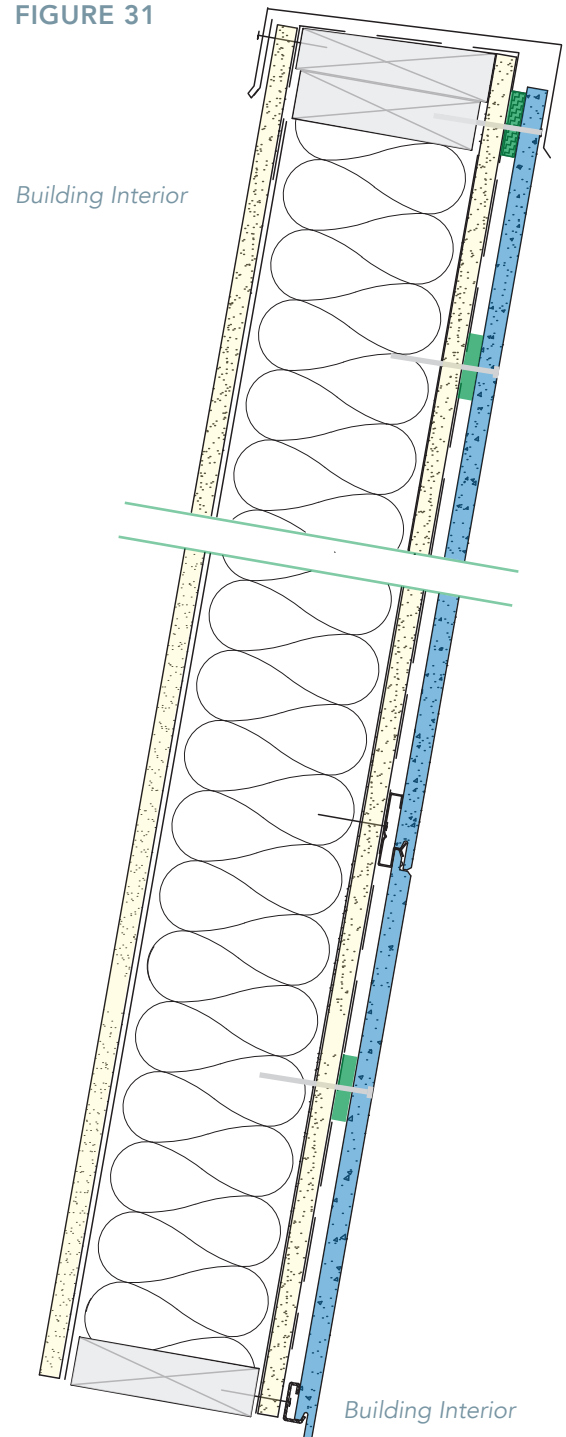
## ANGLED (NON-VERTICAL) WALLS

On walls that are angled forward (*Figure 31*), follow the requirements and procedures listed in [Ceilings](#) section.

On walls that are angled backward, follow the requirements and procedures for standard interior walls described in [AWP 1818](#) and [AWP 3030](#) Panel Installation sections.

Reminder: do not fasten attachments such as light fixtures or signs to AWP installed on angled walls. Utilize blocked penetrations only.

FIGURE 31



---

## PANEL REPLACEMENT

### ALL APPLICATIONS

Set the depth of a circular saw blade slightly deeper than the panel so the saw blade does not cut into the building wrap or sheathing.

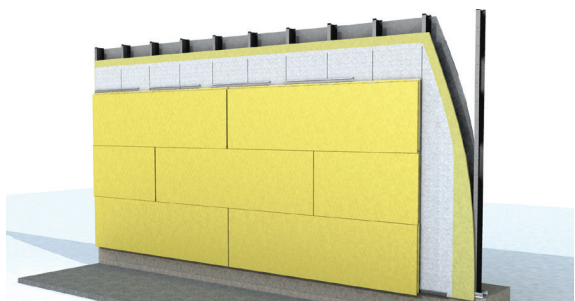
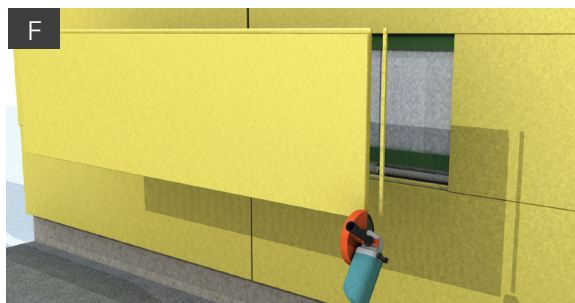
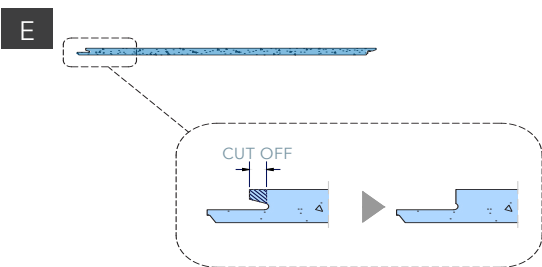
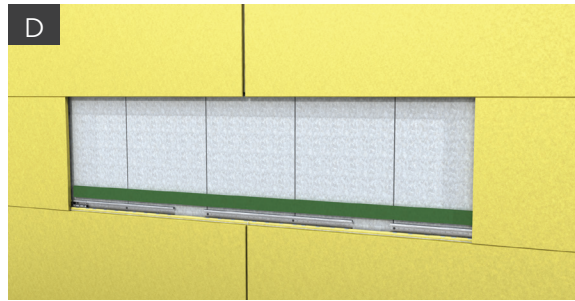
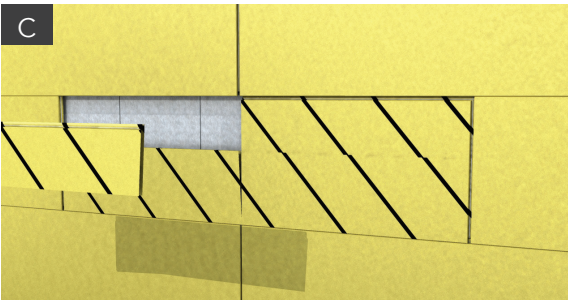
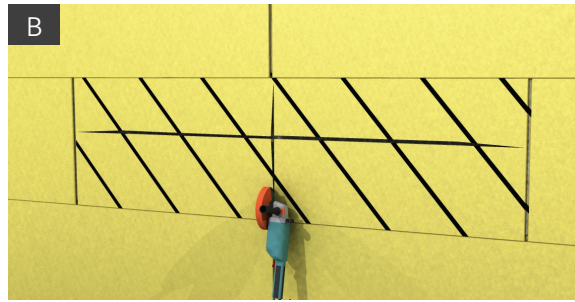
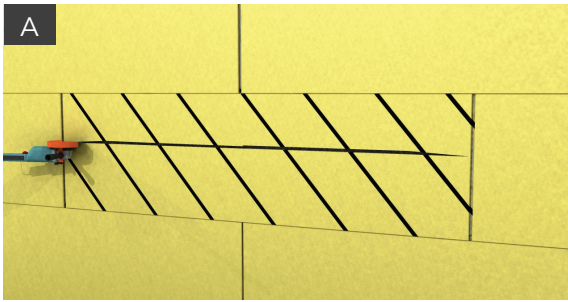
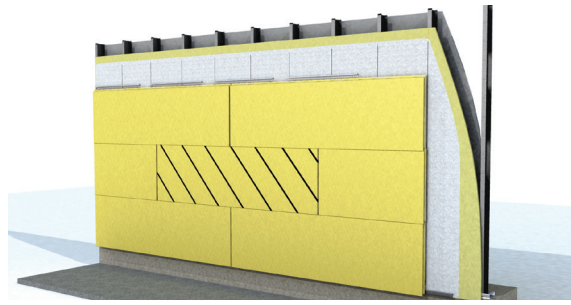
A. Make cuts into the damaged panel and break it into pieces for easier removal of the damaged panel (*Figure 33A & 33B*).

B. Remove damaged panel (*Figure 33C*).

C. Use a 10mm Corrugated Shim and place it behind the new panel at bottom, just above exposed Panel Clips or Starter Track (*Figure 33D*). Cut 3/16" off the back ship-lapped edge at bottom of panel (*Figure 33E*). If panel to be replaced is at the top course or under a window, cut the top edge of the panel as needed and leave the bottom shiplap intact. Add shim at top of uncovered wall space (*Figure 33F*) and face fasten the ripped top edge of the replacement panel using the procedures described in the [Face Fastening Best Practices](#) section.

D. For AWP 1818, cut the right side shiplapped edge off the panel (*Figure 33F*).

E. Lift panel into place by prying from the bottom upward. Pre-drill and face fasten the panel with a screw into the framing members, 2" from panel bottom (*Figure 33G*).



# TECHNICAL RESOURCES

---



## NICHIHA TECHNICAL DEPARTMENT

At Nichiha, our Technical Department is here to support you every step of the way—from design through installation. We know that every project is unique, which is why our team is committed to providing personalized assistance, including detailed technical drawings, installation guidance, and code compliance support. Whether you need help selecting the right system, have questions during the construction phase, or run into challenges in the field, our experts are just a call or email away. Our goal is to make your job easier, minimize installation issues, and help you deliver a flawless finish with confidence. When you work with Nichiha, you're not just getting a product—you're gaining a trusted technical partner.



## TECHNICAL BULLETINS

Even the power of possibilities has limitations. Nichiha offers a wide variety of Technical documents to help aid your design. Refer to [nichiha.com/resources/technical-bulletins](https://nichiha.com/resources/technical-bulletins).

- AWP and Sierra Finishes
- AWP Maintenance Guide
- AWP Minimum Cuts
- Crystalline Silica
- ICFs
- NichiBoard Replacement
- NichiProducts Blocked Penetrations
- NichiProducts Quick Care and Maintenance
- NichiProducts Soffit
- NichiProducts, Sierra, and Savannah Care Maintenance
- Retrofits with AWP
- Sealants
- Sierra Shake Layout
- Vertical AWP Above Sloped Surfaces
- Continuous Insulation and AWP



## DETAILS

For complete offerings of PDF, AutoCAD, and Revit details, visit: [nichiha.com/architectural-details](https://nichiha.com/architectural-details)

For Installation hardware, accessories, and full installation requirements/details, visit: [nichiha.com/resource-center](https://nichiha.com/resource-center)

---

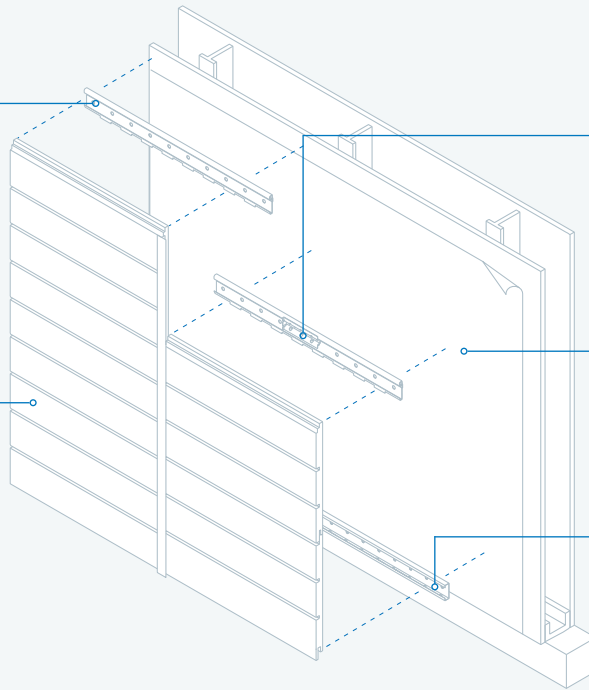
# Efficient installation. Rainscreen performance.

## THE ULTIMATE CLIP

creates a hidden fastening system that all but eliminates face fastening. Installation is quick and easy and never requires specialty subcontractors.

## NICHIHA ARCHITECTURAL WALL PANELS

are lightweight, easy to handle, and available in a virtually endless color palette and a diverse offering of textural finishes.



## NICHIHA'S JOINT TAB ATTACHMENT

is designed to support panel lateral stability, helping vertical joints stay tightly closed. The tab fits in place easily and is fastened to the Ultimate Clip with provided screw.

## DRAINED AND BACK-VENTILATED RAINSCREEN

design allows water to escape and air to circulate, reducing the risk of mold and water damage inside the building.

## THE ULTIMATE STARTER TRACK

pulls double duty. It ensures a fast, level installation, and its patented drainage channel directs water out and away from the base of the wall.



## EASY INSTALLATION

Time-saving clip installation system that reduces construction time and minimizes mistakes.



## NO MORTAR, NO MESS

Prefinished panels eliminate the need for messy mortar or costly masonry-skilled labor.



## ANY-WEATHER PRODUCT

Products can be installed year round in any climate across the country. No geographical restrictions mean more possibilities.



## LOW MAINTENANCE

No-fuss products. Little ongoing cleaning or regular maintenance needed. Bring your vision to life and ensure it looks great for years to come.



## ENGINEERED FOR PERFORMANCE

Go beyond our durable panels and discover a meticulously engineered moisture management system that provides a vertical drainage point for air and moisture to exit.

# Never underestimate the power of REALLY GOOD TOOLS.

---

Whether you are an architect, a builder or a contractor, Nichiha wants to ensure that you have all the information you need to make your project go as smoothly as possible. The way we see it, we are partners. Our website offers a comprehensive collection of technical information, installation videos, Architectural details, in-depth specifications and everything you'll ever need to know about installing Nichiha products.



## DESIGN REVIEW GUIDE

Download our quick reference guide to get an overview on our Architectural Wall Panels.

[nichiha.com/resource-center](https://nichiha.com/resource-center)



## ARCHITECTURAL DETAILS

Take a closer look and download our conceptual detail drawings.

[nichiha.com/architectural-details](https://nichiha.com/architectural-details)



## INSTALL VIDEOS

Watch our installation instructions come to life — check out our installation videos today!

[nichiha.com/resource-center/install-support](https://nichiha.com/resource-center/install-support)



## SUPPORT

Our field and in-house technical teams are here to assist. If you have questions, comments, concerns, or wish to schedule a site visit or pre-con meeting, please call or email us.

1.866.424.4421 or [technicalservices@nichiha.com](mailto:technicalservices@nichiha.com)

# THE POWER OF POSSIBILITIES AND PARTNERSHIPS

Your creative vision is unique. That's why Nichiha wants to offer you the power of cooperation to help your project move from conception to completion. Our ever-expanding offering of textures and finishes lift buildings to new and unexpected places and we want to share them with you. We place a high value on our relationships and are proud to work with our dedicated partners across the country. Join us and discover the power of possibilities and partnerships with Nichiha.

## NICHIHA WARRANTIES AND CERTIFICATIONS

- **ILLUMINATION SERIES PANELS**  
15-year limited warranty\* on panels,  
15-year limited warranty\* on finish.
- **ARCHITECTURAL WALL PANELS**  
(Brick, Block, Stone, Wood, Kurastone)  
15-year limited warranty\* on panels,  
15-year limited warranty\* on finish.
- **METAL TRIM**  
Tamlyn warrants defective-free products for  
a period of 15 years for the original purchaser.  
Please visit [tamlyn.com](http://tamlyn.com) for detailed information  
on terms, conditions and limitations.



WUI



CCRR-0299



Florida Approval



Canada CCMC



NOA



Build America,  
Buy America  
Compliant



Texas Department  
of Insurance



\*See Nichiha warranties for detailed information on terms, conditions and limitations. Visit [nichiha.com](http://nichiha.com) for easy downloadable warranties or call toll-free 1.866.424.4421 for a copy. Nichiha SDS are available on [nichiha.com](http://nichiha.com).

**SILICA DUST WARNING:** Nichiha products may contain some amounts of crystalline silica [a.k.a. sand, silicon dioxide], which is a naturally occurring mineral. The amount will vary from product to product. Inhalation of crystalline silica into the lungs and repeated exposure to silica can cause health disorders, such as silicosis, lung cancer, or death depending upon various factors. To be conservative, Nichiha recommends that whenever cutting, sawing, sanding, sniping or abrading the product, users observe Safety Instructions. For further information or questions, please consult the MSDS, your employer, or visit [osha.gov/SLTC/silicacrystalline/index.html](http://osha.gov/SLTC/silicacrystalline/index.html) and [cdc.gov/niosh/topics/silica](http://cdc.gov/niosh/topics/silica). The MSDS for Nichiha products are available at [nichiha.com](http://nichiha.com), at your local Nichiha dealer or through Nichiha directly at 1.866.424.4421. FAILURE TO ADHERE TO OUR WARNINGS, MSDS, AND OTHER INSTRUCTION MAY LEAD TO SERIOUS PERSONAL INJURY OR DEATH.

ARCHITECTURALBLOCK, CANYONBRICK, EMPIREBLOCK, ILLUMINATION, INDUSTRIALBLOCK, KURASTONE, PLYMOUTHBRICK, MIRAIA, RIBBED, ROUGHSAWN, SANDSTONE, TUFFBLOCK, THE POWER OF POSSIBILITIES, VINTAGEBRICK and VINTAGEWOOD are trademarks of Nichiha USA, Inc.

6465 E. JOHNS CROSSING, SUITE 250, JOHNS CREEK, GA 30097 | 866.424.4421 | [NICHIHA.COM](http://NICHIHA.COM)

NOTE: Printed material may not accurately depict actual product color. Printed in the USA.

NICHIHA.COM

©2026 Nichiha USA, Inc. All rights reserved. V03.26



Scan here to access the digital catalog