



AWP MAINTENANCE GUIDE

This document is intended as a reference guide for the basic maintenance and care of Nichiha Architectural Wall Panels (AWP). It outlines the important steps an AWP owner must follow in order to maintain the durability and warranty eligibility of the products.

INSPECTION & MAINTENANCE SCHEDULES

Nichiha recommends the owner to conduct annual inspections of the AWP based upon the following three main areas:

1. **Panel Appearance:** The owner should annually check the panels for visual defects such as indentations or chips. Refer to *Repairing Minor Damage* on the next page
2. **Finish:** Natural environmental factors such as sunlight and weather directly affect the life of any paint finish including Nichiha AWP coatings. If needed, after the finish warranty has expired, Nichiha recommends the repainting of the AWP product. Refer to *Repainting Instructions* on the next page.
3. **Sealants:** Inspect sealants regularly to identify any cracking, lack of two-sided adhesion, or shrinking. Nichiha requires ASTM C920 compliant sealants. See Nichiha Technical Bulletin: [Sealants](#). Refer to the sealant manufacturer for further information about product requirements and longevity.

ANNUAL CLEANING

- Wash down exterior surfaces as needed to remove any dirt and debris. DO NOT use high-pressure power washers which may damage fiber cement. Use no more than 400 psi at 10-12" away from panels.
- A mild household detergent and soft bristle brush or cloth may be used if needed. Commercial mold/mildew cleaners may be used but dilute chlorinated mold killer with water, dilution percentage should be based on manufacturer recommendation.
- Do not allow cleaners to dry on the panels.
- Rinse thoroughly from high to low.



AWP MAINTENANCE GUIDE

AROUND THE STRUCTURE

- **Vegetation:** A one foot clearance between shrubs, plants, and vegetation and the cladding should be maintained. Prune back plants that are too close or touching the siding.
- **Gutters:** Ensure that all gutters and downspouts are kept clear to prevent overflow onto or behind the cladding.
- **Ground clearance:** Ensure the minimum required ground clearance of 6" is maintained over organic or non-permanent surfaces by preventing build-up of decorative mulch, stone, etc. A minimum required ground clearance of 2" is required over hardscape or decking.
- **Drainage:** Do not allow water or snow to collect against or near the cladding by maintaining proper drainage around the building.
- **Sprinklers:** Do not allow sprinklers to spray directly on the cladding. Regular wetting of the cladding with sprinkler systems may cause discoloration and may also shorten the service life of the finish.

TOUCH UP PAINT

**It is impossible to fully match the AWP factory finish sheen in the field. It is imperative that the least amount of touch up paint be applied to AWP as possible

**Touch up paint must be exterior grade 100% acrylic latex and can be color matched by taking a panel sample to your local paint or home improvement store

Scratches / face fastening concealment

- Isolate touch-up locations with low adhesive painter's tape.
- Where face fasteners have been used and patched by exterior filler compound, use a cotton swab or fine tip applicator to lightly dab touch-up paint
- For scratches, utilize the same applicator method as used for face fasteners. It is important to keep the paint within the scratch only. Do not feather, or spread, the paint after application



AWP MAINTENANCE GUIDE

REPAINTING PRE-FINISHED PANELS

- Using a low pressure power washer, clean any dirt, debris or mildew off of the panels. A mild, non-acidic detergent can be used during this process.
- Allow the panels to fully dry before painting
- If needed, apply a primer base coat*
- Do not use stains, oil or alkyd based paints
- Repaint with a high quality exterior grade 100% acrylic latex paint (Some examples of top quality acrylic latex paints are Sherwin Williams in Emerald and Resilience, PPG in Acri-Shield, and Benjamin Moore in Regal Select)
- Spray application is recommended. The use of a 515 or 517 tip will provide an even coat and give the painter a 10" fan for coverage as well.
- More than one coat is recommended*

*Consult a professional exterior painter to ensure proper application of any field applied paint. The paint manufacturer is best equipped to determine the most optimal field painting options, and they will provide the quality assurance and warranty coverage for their products.

REPAIRING MINOR DAMAGE

1. Isolate the blemish with a low adhesive tape such as painters tape.
2. Lightly brush/abrade the surface within the taped off area in order to remove any loose material.
3. Carefully fill and smooth the resultant prepped area with cementitious patching material such as MH Ready Patch. Allow to dry/cure fully.
4. Gently smooth the patch and then apply color-matched touch-up paint to the affected area with a small fine tip applicator or cotton swab. Allow touch-up paint to dry and remove the tape.

PANEL REPLACEMENT

For horizontal panel replacement please see page 45 of the Horizontal Guide

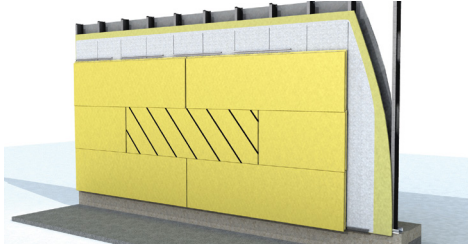
For vertical panel replacement please see page 33 of the Vertical Guide.



AWP MAINTENANCE GUIDE

1818/3030 HORIZONTAL PANEL REPLACEMENT

ALL APPLICATIONS



Set the depth of a circular saw blade slightly deeper than the panel so the saw blade does not cut into the building wrap or sheathing.

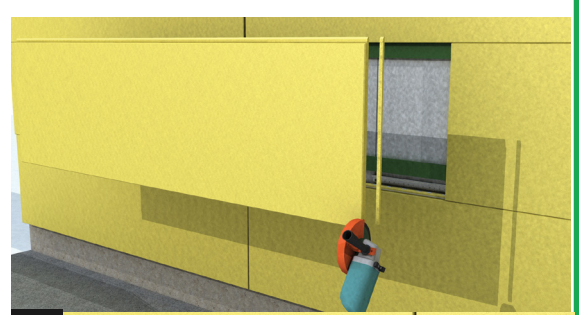
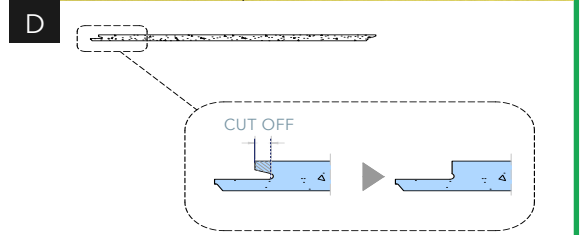
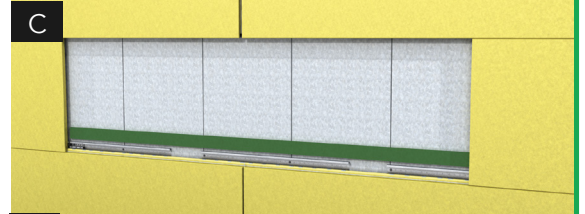
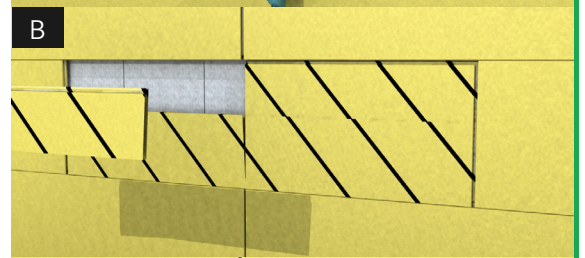
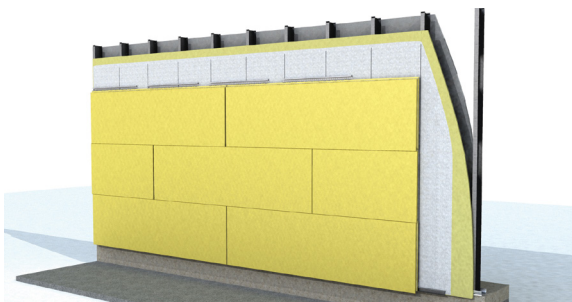
A. Make cuts into the damaged panel and break it into pieces for easier removal of the damaged panel.

B. Remove damaged panel.

C. Use a 10mm Corrugated Shim and place it behind the new panel at bottom, just above exposed Panel Clips or Starter Track. Cut 3/16" off the back ship-lapped edge at bottom of panel. If panel to be replaced is at the top course or under a window, cut the top edge of the panel as needed and leave the bottom shiplap intact. Add shim at top of uncovered wall space and face fasten the ripped top edge of the replacement panel.

D. For AWP 1818, cut the right side shiplapped edge off the panel.

E. Lift panel into place by prying from the bottom upward. Pre-drill and face fasten the panel with a screw into the framing members, 2" from panel bottom.





3030 VERTICAL PANEL REPLACEMENT

Set the depth of a circular saw blade slightly deeper than the panel so the saw blade does not cut into the building wrap or sheathing.

Make cuts into the damaged panel and break into pieces for easier removal. (Figure F)

Remove damaged panel.

If necessary, cut the new panel to appropriate height.

Looking at the panel oriented horizontally, cut 3/16" off of the back ship-lapped edge at the bottom of the panel. (Figure G)

Add 10mm Shim along the left side of the uncovered wall surface. (Figure I)

Set the new panel in place by first inserting the gasketed edge under the ship lap of the existing panel. (Figure H)

Pre-drill and face fasten the left edge of panel through the Shim with a screw every 16" into framing, furring, or blocking (Figure J). When only wood sheathing is available for the face fasteners, reduce the screw spacing to 6-8".

Fill countersunk screw heads per *Touch Up Paint* and *Repairing Minor Damage*.

