

KURASTONE INSTALLATION

Supplemental Guide for Mitered Corners

GENERAL

This document is intended to supplement the Nichiha's KuraStone Installation Guide, which can be found on our website, along with all other technical documents such as technical bulletins, architectural details, instructional videos, and code compliance reports: nichiha.com/resource-center.

Install products in accordance with the latest installation guidelines and all applicable building codes and other laws, rules, regulations, and ordinances. Review all installation instructions, [Intertek CCRR-0290](#), and other applicable product documents before installation. This document's effective date is August 1, 2025.

BASICS OF KURASTONE

Nichiha's KuraStone pieces are designed with no dedicated top or bottom, so they can be reversed to ensure a random pattern. KuraStone may only be installed in a horizontal orientation.

StackedStone and LedgeStone wall pieces are 150mm (nom. 6") in height and come in three lengths: 260, 390, or 650mm (l) (nom. 10-1/4", 15-3/8", 25-5/8").

When installing, randomly use the different lengths in order to stagger seams on the wall. One pack contains three Large, two Small, and two Medium pieces.

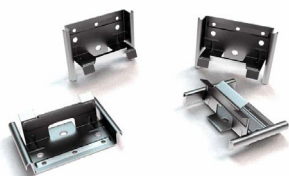


StackedStone



LedgeStone

KuraStone pieces feature grooves on four sides. Clips can be inserted into any side. Clips are placed at each vertical joint and at the center of the bottom of each individual piece.



KuraStone JE 720 Clips

BEST INSTALLATION PRACTICES

OUTSIDE CORNERS

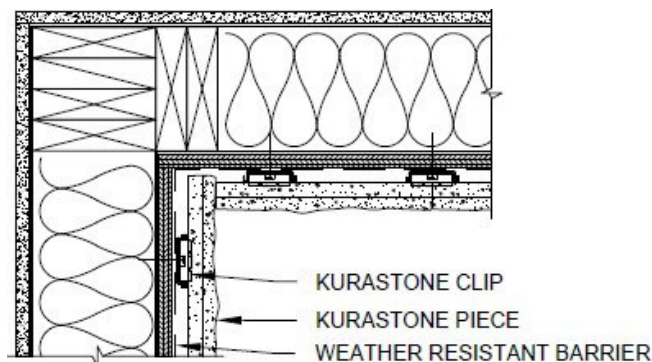
Do not pre-install KuraStone Outside Corners first. Install them at the same time as the same-coursed pieces as regular work progresses in either direction and upward with each new course.

Install the Outside Corner and butt tightly to the adjacent KuraStone wall piece. Place a clip 1-2" from the corner of the building on both sides. Place another clip at the joint of the joining pieces on each side.



INSIDE CORNERS

At inside corners, KuraStone wall pieces can be butted together. Wall pieces can also be mitered to create a sharp 90 degree angle. Attach Clips at the nearest joints to the inside corner and within 2-3" of the inside.



KURASTONE INSTALLATION

Supplemental Guide for Mitered Corners

CUTTING

As with any natural stone, masonry, or concrete based product, when cutting, drilling, sawing, sanding, or abrading fiber cement cladding, proper safety measures must be taken due to the potential for airborne silica dust, an OSHA-identified hazardous substance that can pose serious medical risks.

Always cut KuraStone pieces outside or in a well-ventilated area. Do not cut KuraStone in an enclosed area.

Always cut pieces from the front to minimize chips on face.

Always wear safety glasses and NIOSH/OSHA approved respirator with a rating of N, O, or P 100. Carefully follow the respirator manufacturer's instructions as well as applicable governmental safety regulations concerning silica. Refer to Nichiha's SDS for more information.

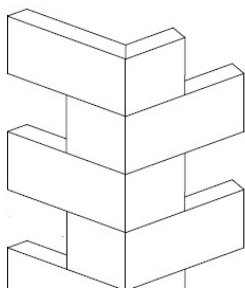
Use a miter saw with a diamond-tipped fiber cement or masonry blade when cutting KuraStone. Connect the saw to dust collecting vacuum with HEPA filter.



MITERED OUTSIDE CORNERS

Outside corners can be fabricated in the field by mitering the large panels at 45 degrees for a continuous clean look.

Cut panels at a 45° angle, then dry fit them together to ensure the best appearance. Always cut panels from the front side. Wipe all cut edges with a damp cloth to remove dust and debris.



For optimal results, cut corners with both a short and long return.

Apply a polyurethane adhesive (e.g., PL Premium®) to the mitered edges. Follow the adhesive manufacturer's instructions for proper application and cure times.

Attach panels to the substrate using the JE 720 Kurastone clips. Use a minimum 3/4" (20mm), fully-threaded, #8 or greater wood screw. DO NOT USE NAILS for fastening KuraStone pieces. Fasten each clip with two screws.

Do not disturb or touch the mitered edges until the adhesive is fully cured. If desired, once dry, bevel the edges using a sander, file or grinder until smooth and clean.

Fill any gaps or crevices with an exterior-grade cementitious filler such as MH Ready-Patch® by Zinsser. Do not use polyurethane sealant as a filler.

Apply a color-matched 100% exterior acrylic latex paint to all beveled edges for a clean, finished look.

