



BRICK, STONE & BLOCK PANEL MAINTENANCE, CLEANING, REPAIR & REPLACEMENT GUIDELINES

Read these maintenance, cleaning & replacement guidelines completely and thoroughly before beginning.

These instructions cover maintaining, cleaning and replacing panels only. Please see Nichiha Panel Installation Instructions for all other installation guidelines.

Replacing Damaged Panels	2
Ship-lapped Joint Separation Repair Process	4
Paint Touch Up	7
Touch Up Process	8
Cleaning Panels	8
Cleaning Sealant	9
Sealant Replacement	9
Removal of Exterior Acrylic Latex Paint	9
Test Results of Paint Removal On Panels	10



Replacing Damaged Panels



- 1 Set the depth of the circular saw blade slightly deeper than the panel so the saw blade does not cut into the building wrap or sheathing.



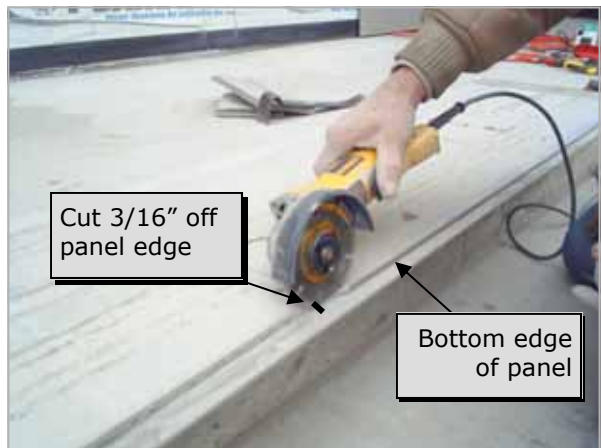
- 2 Make additional cuts into the damaged panel and break into pieces for easier removal of the damaged panel.



- 3 Remove damaged panel.



- 4 Cut 3/16" off ship-lapped edge at bottom of panel.



- 5 Cut the right side of ship-lapped edge off the panel.



- 7 Prepare to set new panel in place.



- 6 Use a 1/4" plastic shim and place behind the new panel at top and bottom.



- 8 Lift panel into place by prying from the bottom upward. Pre-drill and face fasten panel with a screw into framing member.



shim

Continued...

- ⑨ Fill countersunk screw heads with color - matching polyurethane sealant.



Completed Repair



Ship-lapped Joint Separation Repair Process

Tools Needed

- Wood block
- Drill
- Pry bars
- Flooring tongue and groove tool
- Spackling tools
- Small paint brushes
- Flat bar



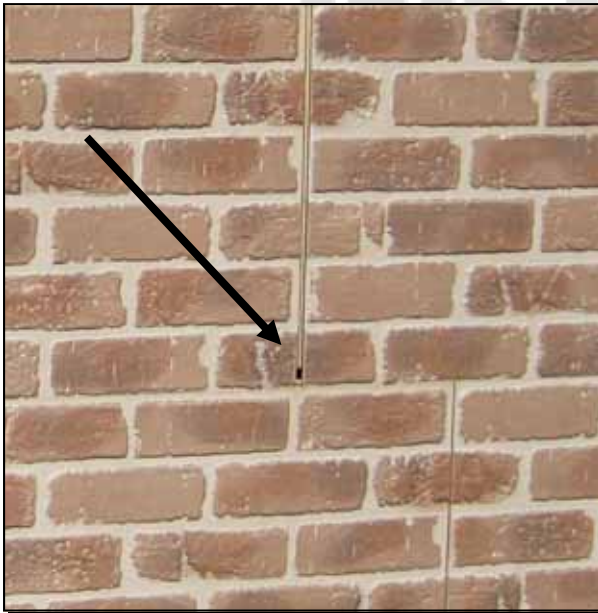
Supplies Needed

Exterior filler
Color matched paint
Polyurethane adhesive



Ship-lapped Joint Separation Repair Process

- ◆ Examine the wall and determine the most efficient way to move the panels. It may not always be in a straightforward left-to-right continuous direction.



- ◆ Using a two by four or other block of wood, with the ends wrapped in tape or cloth to protect the panels, (In some cases laying the wood flat along the panel edge can spread the driving impact over the entire panel end) tap the panel in the desired direction of motion while another person helps to push/bounce/vibrate with their hands.
- ◆ Place a piece of tape over the panel piece to distinguish the panels that have been worked on (to locate panels for possible face fastening later).



- ◆ If the panel is located at the left end of a row, use a flat bar or any bar to reach into or behind the trim to help push the panels over.



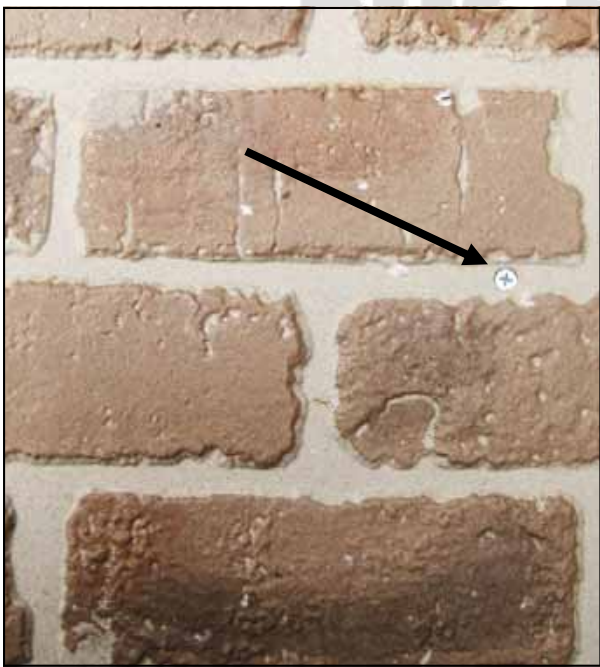
- ◆ Pre-drill at least one inch from the panel edge and in the mortar joint, where possible.
- ◆ Face-fasten the end of the row of the panels pushed to prevent the panels from separating again.



- ◆ Fill the hole with exterior-grade cementitious filler.



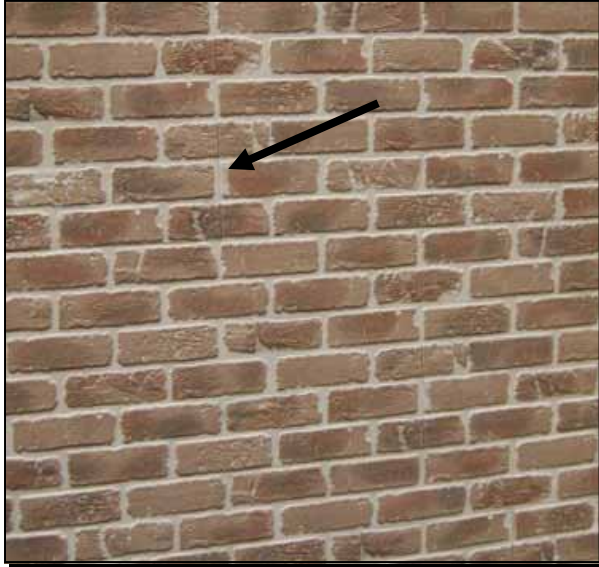
- ◆ Using appropriate screws (with low-profile heads such as pan head or bugle head) fasten panels into the substrate (taking care to hit a stud if at all possible) through the pre-drilled hole.



- ◆ Touch-up with color matched paint.



- ◆ Finished joint repair



Paint Touch-Up

- ◆ Nichiha recommends touch-up paint formulas for mitered corners, fastener fill-in and small nicks and scratches for all Brick, Stone and Block panels, please visit our website for the latest information. Provided by major paint manufacturers, these formulas are intended for touch-up only. For large damaged areas, follow Replacing Damaged Panels procedure in this document.
- ◆ Nichiha brick, stone and block panel installations require different degrees of touch-up painting. Mitered corners, face-fastened panels and penetration cut-out areas will need touch-up paint.
- ◆ Many Nichiha panel products have multiple colors on a single panel. For example, FieldStone™ Pepper Sand panels, have four different stone colors intermixed. When touching up multiple colored panels, it is recommended that a base coat and multiple overspray coats be used.
- ◆ The level of touch-up paint process to follow will depend on the touch-up area. Areas that are in plain sight, as opposed to areas 30 feet high, will require a more precise process. Face-fastened panels, if in plain sight such as around windows, should utilize a more detailed touch-up process, if panels are under eaves or far above sight line, then just a mortar base coat may suffice.

Touch-Up Process

- ❶ First apply a paintable exterior grade cementitious filler to areas to fill any voids.
- ❷ Select the appropriate base coat for brick, stone and block mortar from the touch-up paint matrixes¹ and apply to area.
- ❸ In areas of plain sight, the touch-up paint should duplicate each of the colors and texture of the individual bricks, stones or blocks on the panel. This will involve several coats of over-spray touch-up paint using either a dry brush, dabbing with the brush tip, or air-brush feathering using an airless sprayer.



Cleaning Panels

- ◆ After completion of installation, it may be necessary to clean panels.
- ◆ Rub the wall with a soft brush using a diluted neutral detergent. Do not rub wall panel with hard tools such as a metal wire brush or other abrasive materials.
- ◆ When diluting the neutral detergent, follow the manufacturer's instructions. If several dilution methods are suggested, USE THE ONE RESULTING IN THE WEAKEST SOLUTION. HARD BRUSHES OR STRONG NEUTRAL DETERGENTS MAY DAMAGE THE PANEL COATING.
- ◆ When cleaning panels, use no more than 400 psi of water pressure at 10" to 12" away.
- ◆ The normal pressure available for a rental pressure washer is usually 2300 psi. If this is used you must hold the wand about three to six feet from the panel surface to prevent damage in the panel finish.
- ◆ To clean heavily soiled areas a mild detergent and/or soft bristle brush may be required.

DO NOT USE THINNERS OR OTHER SUCH SOLVENTS. USING NON-DILUTED SOLVENTS MAY RESULT IN PANEL DAMAGE.

¹ Nichiha provides paint formulas for Behr, Valspar, Olympia & Sherwin Williams Premium paints. Visit nichiha.com for complete listings.



Cleaning Sealant

- ◆ If sealant is conspicuously dirty, rub the area with a soft brush using a diluted neutral detergent. Do not rub sealant with hard tools such as a metal wire brush or other abrasive materials.
- ◆ When diluting the neutral detergent, follow the manufacturer's instructions. If several dilution methods are suggested, USE THE ONE RESULTING IN THE WEAKEST SOLUTION. HARD BRUSHES OR STRONG NEUTRAL DETERGENTS MAY DAMAGE THE SEALANT.
- ◆ When cleaning sealant, use no more than 400 psi of water pressure at 10" to 12" away.
- ◆ The normal pressure available for a rental pressure washer is usually 2300 psi. If this is used you must hold the wand about three to six feet from the panel surface to prevent damage in the sealant.
- ◆ DO NOT USE THINNERS OR OTHER SUCH SOLVENTS. USING NON-DILUTED SOLVENTS MAY RESULT IN SEALANT DAMAGE.

Sealant Replacement

- ◆ Sealants can degrade from natural forces such as building movement and settlement, extreme temperature fluctuations and ultraviolet rays. This can result in the splitting, cracking or peeling of the sealant.
- ◆ When replacing sealant, completely remove old sealant. Apply exterior rated primer to exposed panel edges and re-apply sealant in accordance with sealant manufacturer's instructions.

Removal of Exterior Acrylic Latex Paint From Nichiha Panels

- ◆ *Wet Paint Removal* - While the paint is still wet, flush the area with clean water, using mild abrasion with a clean cloth or soft brush remove soil.
- ◆ *Semi-Dry Paint Removal* - If paint has set, but not dried, flush and clean as above, followed up with light scrubbing with alcohol removing any remaining paint residue. Rinse with water and clean cloth.
- ◆ *Dry Paint Removal* - If paint has thoroughly dried use readily available paint remover.
- ◆ Follow manufacturer's detailed instructions. Paint brands will require different products and methods to remove paint residue. Always try a test patch on a sample or low visibility spot.



Paints and Graffiti Removal

The following products have been tested on Nichiha panels to aid in the removal of graffiti type markings. The panels were sprayed with an indoor/outdoor aerosol spray paint, left to dry overnight then applied following the manufactures guidelines. All products tested achieved good results, however, the outcome may vary depending on the amount of paint needed to be removed. Be sure to follow all manufacture’s guidelines and test in an inconspicuous area before working in a larger area. Nichiha holds no responsibility for any damages to the panels caused by the use of these cleaners.

Citristrip www.citristrip.com

Products tested:

Citristrip Striping Gel - One Quart container

Citristrip Stripping Aerosol - 18 oz. spray can

Available at retail do it your self stores

Goof Off Graffiti Remover www.goof-off.com

Products tested:

Goof Off Aerosol - 16 oz. spray can

Goof Off - 22 oz. trigger spray bottle

Available at retail do it yourself stores

Tagaway www.tagaway.com

Product tested:

Tagaway - 32 oz. trigger spray bottle

Available online and local stocking distributors

Zinsser www.zinsser.com

Product tested:

Zinsser Graffiti Remover and Stripper - 16 oz. trigger spray bottle

Available at retail do it yourself stores



<p>Nichiha USA, Inc. 6659 Peachtree Industrial Boulevard, Suite AA, Norcross GA 30092 Toll Free: 1.86 NICHHA 1 (1.866.424.4421) Phone: 770.805.9466 Fax: 770.805.9467 nichiha.com</p>	
--	---